

HXL-Series II , Vacuum / Pressure Pumps

HXL75WV

◆ Mechanical Oil Pump

- Automatic Oiling.
- No Adjustment Required.
- Delivers Right Amount of Oil at All Working Levels.

◆ End Thrust Protection

- Prevents Rotor-to-Endcover Contact Created by Direct P.T.O. Drive or Misaligned Belt Driven Systems.

◆ Liquid Cooled Design

- Prevents Winter Freeze-ups
- Allows Pumps to Operate @ 25" Hg Continuously.
- Reliable Operation Under Extreme Hot or Cold Weather Conditions.

◆ Integral Valve

- Allows Pump to Operate in Vacuum and Pressure Mode.
- Reduces Plumbing and Installation Costs.

◆ Double End Shaft

- Accomodates Clockwise or Counter-Clockwise Drive Systems.



◆ Masport Quality & Performance

- Achieve Minimum 27" Hg (Intermittent).
- Precise Machining and Assembly.
- Heavy Duty Bearings.
- Viton Oil Seals for Longer Service Life.
- Kevlar Vanes are Heat Stabilized and Machined with Exacting Tolerances for Superior Ruggedness and Durability.
- Easy to Service.
- Superior Pump Life.

◆ Performance Warranty

- One Year Warranty.

PERFORMANCE DATA

Performance Data – Vacuum

Pump R.P.M.	Displacement C.F.M.	S.C.F.M. and A.C.F.M. @ VACUUM											Maximum Vacuum – “Hg	
			5	10	15	18	20	22	24	25	26	27	Continuous	Intermittent
1100	196	SCFM	140	110	79	61	47	36	22	15	9	3	25	27
		ACFM	168	165	158	152	142	134	111	92	66	30		
1275	230	SCFM	162	127	92	71	55	43	26	18	10	3.5	25	27
		ACFM	195	190	184	177	164	160	129	108	77	35		

Performance Data – Pressure

Pump R.P.M.	Displacement C.F.M.	S.C.F.M. @ P.S.I.G.							Maximum Pressure – P.S.I.G.	
		5	10	15	18	20	25	30	Continuous	Intermittent
1100	196	168	160	152	143	134	127	119	20	35
1275	230	193	184	175	165	154	146	136	20	35

Horsepower Required @ P.S.I.G.

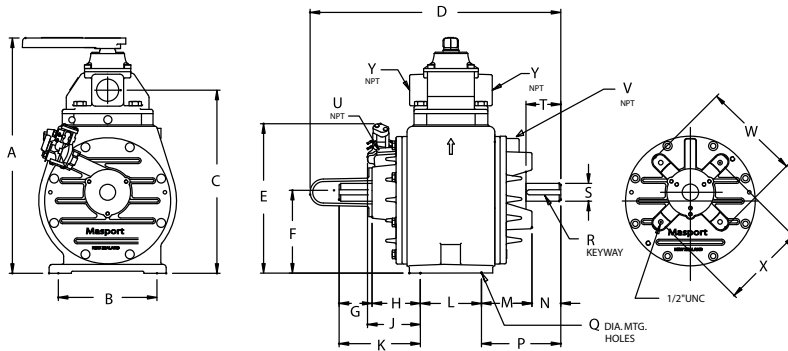
Pump R.P.M.	P.S.I.G.						
	5	10	15	20	25	30	35
1100	9.7	12.5	15.6	18.4	21.7	25.6	27.5
1250	11	14.2	17.7	20.9	24.6	29.1	31.3

Horsepower Required @ “Hg

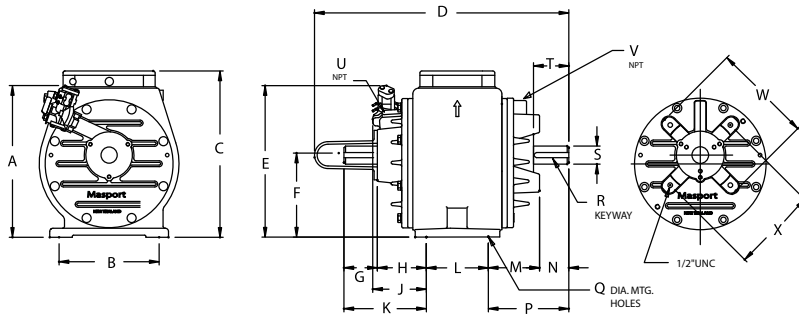
Pump R.P.M.	Vacuum “Hg				
	5	10	15	20	27
1100	6.9 HP	8.1 HP	8.6 HP	9.6 HP	10.8 HP
1250	7.8 HP	9.2 HP	9.7 HP	10.9 HP	12.3 HP

DIMENSIONAL DATA

HXL75WV Pump



HXL75WF Pump



	HXL75WV	HXL75WF
A	22 3/4	12 5/8
B	8 5/8	8 5/8
C	16 29/32	14 11/32
D	21 1/8	21 1/8
E	12 5/8	12 5/8
F	7 1/2	7 1/2
G	3 25/32	3 25/32
H	4 3/8	4 3/8
J	5 5/32	5 5/32
K	8 5/32	8 5/32
L	4 13/16	4 13/16
M	4 17/32	4 17/32
N	3 5/8	3 5/8
P	8 5/32	8 5/32
Q	9/16	9/16
R	5/16 x 5/16 x 2	5/16 x 5/16 x 2
S	1 3/8	1 3/8
T	3 5/8	3 5/8
U	1/8	1/8
V	1/4	1/4
W	8 15/32	8 15/32
X	7 1/4	7 1/4
Y	2 1/2	2

ALL DIMENSIONS IN INCHES.

For additional information on these quality Masport Vacuum / Pressure Pumps contact:



MASPORT INCORPORATED

6140 McCormick Drive

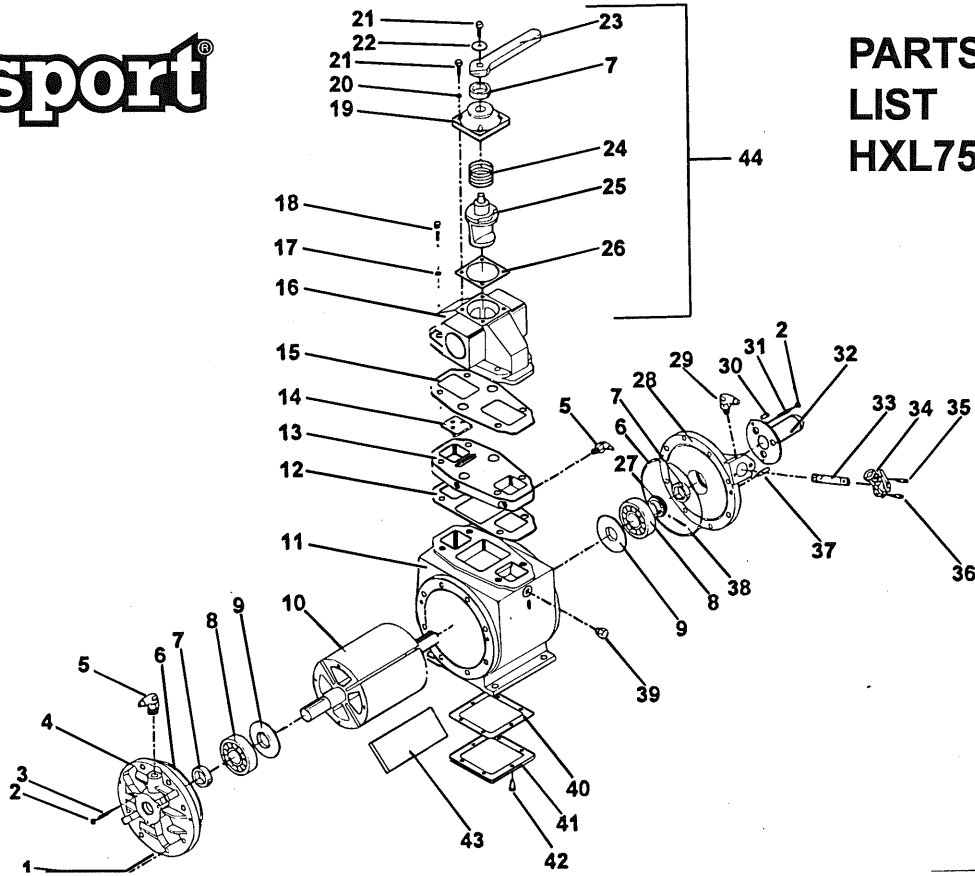
Lincoln, Nebraska 68507

Ph: 402-466-8428 Fax: 402-466-8355

Web: www.masportpump.com

CALL TOLL FREE 800-228-4510

Masport®



PARTS LIST HXL75WV II

HXL75WV SERIES II LIQUID COOLED PRESSURE / VACUUM PUMP PARTS LIST (968670)

Ref	Description	Part No.	Qty.	Ref	Description	Part No.	Qty.
1	Bolt	501569	16	26	Gasket	568044	1
2	Nut	504278	6	27	Gear	568158	1
3	Set Screw	504276	3	28	Endcover	968854	1
4	Endcover	968843	1	29	Swivel Elbow *	568085	1
5	Swivel Elbow *	568086	3	30	Bolt	501571	3
6	O-Ring	501677	2	31	Set Screw	504277	3
7	Oil Seal	501015	3	32	Shaft Guard	568622	1
8	Bearing	503098	2	33	Drive Shaft Assembly	968045	1
9	Bearing Spacer	968611	2	34	Oil Pump	575437	1
10	Rotor Assembly (Incl. 8, 9)	968614	1	35	Cap Screw	504262	1
11	Cylinder	968712	1	36	Cap Screw	504261	1
12	Gasket	568703	1	37	Dowel Pin	503258	4
13	Adaptor Plate	968011	1	38	Set Screw	504264	1
14	Flap Assembly	968026	1	39	Plug	27300	1
15	Gasket	568653	1	40	Gasket	568708	1
16	Valve Body	968010	1	41	Inspection Plate	968707	1
17	Washer	500203	4	42	Bolt (Inspection Plate)	501571	6
18	Bolt	502024	4	43	Vane Pack (4)	975539	1
19	Cap	968035	1	44	Integral Valve Assembly	968003	1
20	Washer	501610	4		(Incl. 7, 16, 19, 20, 21, 22, 23, 24, 25, 26)		
21	Bolt	501617	5	45	Endcover Shim Gasket **		
22	Washer	501550	1		.002" Thickness	542011	***
23	Handle	968037	1		.003" Thickness	542012	***
24	Spring	568038	1	46	Oil Line (ft.) **	600293	***
25	Spool	968094	1				

*NOTE: #5 and #29 CHECK VALVES USED ON EARLIER MODELS ONLY. **NOT SHOWN. ***QUANTITY VARIES.