

Proudly Distributed By:

ARMSTRONG EQUIPMENT INC.



MADE IN THE USA



1600 Product Catalog

NVE
National Vacuum Equipment

Challenger Series
VACUUM PUMPS & BLOWERS

Table Of Contents

3 1600 High Vacuum Tri-Lobe Blowers

4 1600 Pro Pak - Side Mount

5 1600 Pro Pak - Top Mount

6 1600 Top Mount

7 1600 Diesel Engine Drive

8 Components & Accessories

S
T
N
E
T
N
C
O
N
T
E
N
T
S



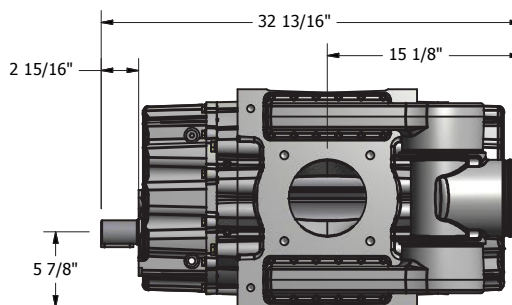
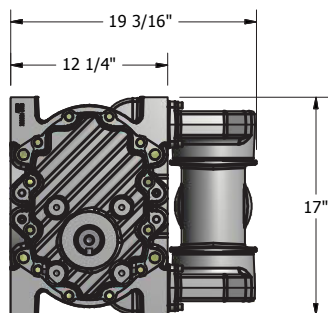
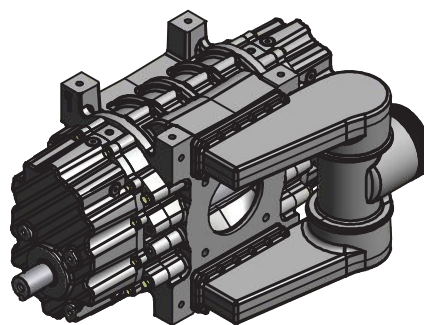
1600 High Vacuum Tri-lobe Blowers Challenger Series

Features

- Tri-lobe design with precision matching
- Oil-less operation
- Continuous duty performance
- Installation ready
- Ballast manifold available
- Designed, built, and supported in the USA

1600 CHALLENGER BLOWER | SPECIFICATIONS

Air Flow - Free Air	1600 cfm
*Maximum Vacuum	
Maximum Intermittent Pressure	10 PSI
*Operating Speed - Recommended	3600 RPM
Hp Required @ 27" hg	95.4
Hp Required @ 10 psi	72.9
Porting Size	6"
Shaft Size (1/2" key)	1 7/8"



PRODUCT DESCRIPTION

1600 Blower w/Ballast Manifold

PART NUMBER

CALL

WEIGHT

604 lbs

MSRP

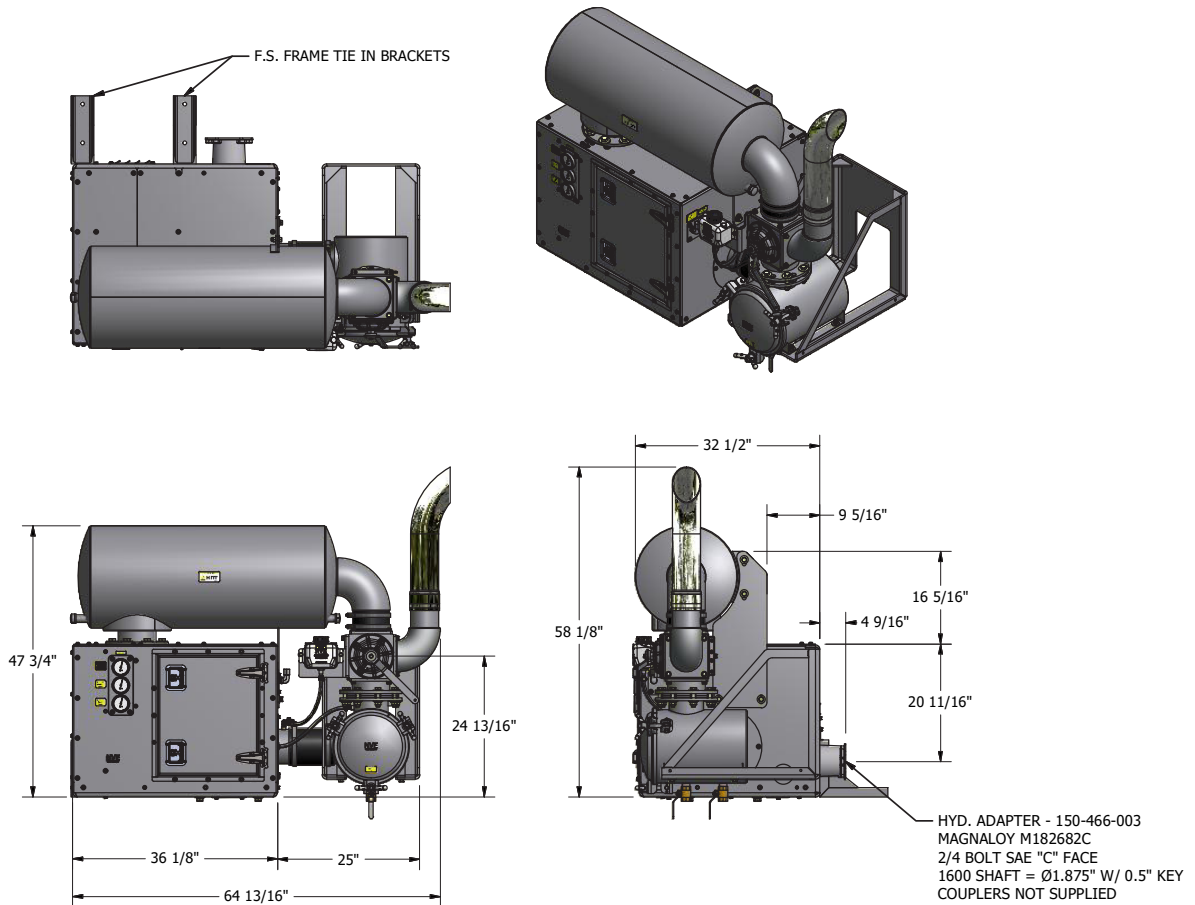
CALL

The maximum allowable operating vacuum will vary depending on R.P.M., ambient temperature, altitude and time running. The basic principle to keep in mind is - faster R.P.M., higher air temperature and longer run time all equal more heat in blower. When installing a NVE 1600 blower we recommend a normal R.P.M. of 3600. Other speeds are ok as long as exhaust gas temperatures read on the supplied thermometer do not exceed 380 degrees F.

1600 Packages Pro Pak - Side Mount

Features

- Conveniently mounts on the side of the truck frame
- Equipped with 4-way valve, check valve, final filter, oil level sight eyes, temperature and vacuum/pressure gauges
- Available in hydraulic or gearbox drive
- Designed, built, and supported in the USA



PRODUCT DESCRIPTION	PART NUMBER	WEIGHT	MSRP
1600 Side Mount Pro Package CCW W/HYD Drive (Pictured Above)	147-1600-007	---	\$20,085.00
1600 Side Mount Pro Package CCW W/Gearbox Drive	147-1600-008	---	\$22,145.00

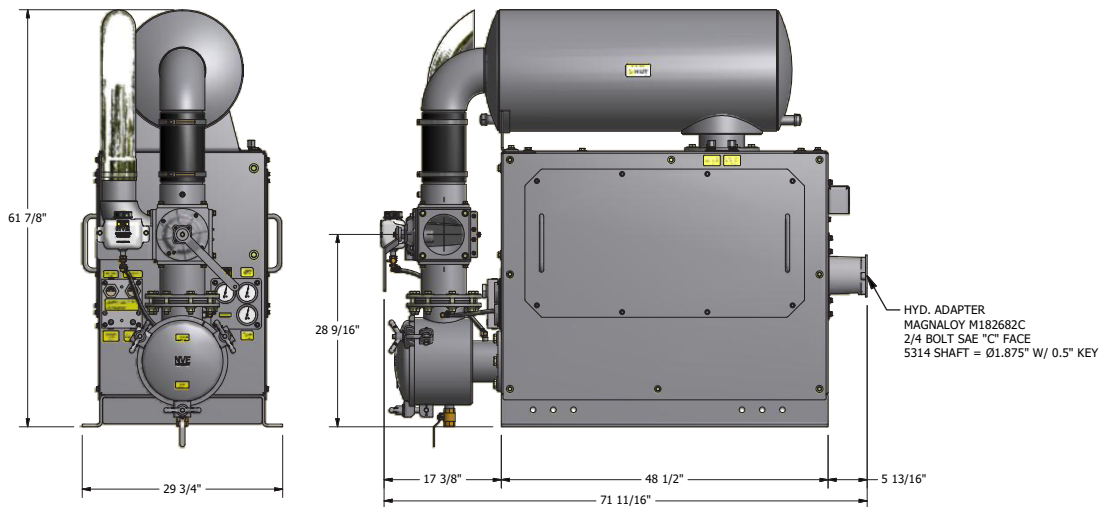
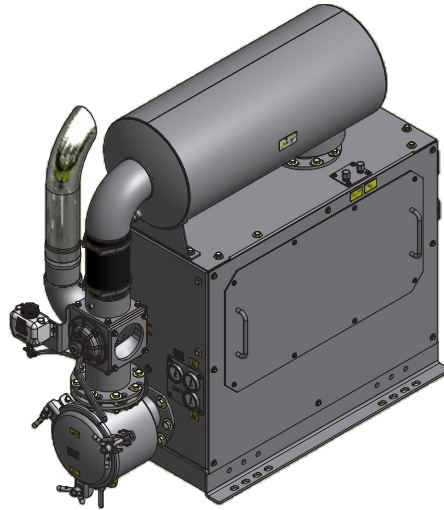
1600 Pro Pak - Top Mount

Challenger Series



Features

- Conveniently mounts behind the cab
- Sound dampening design for quiet operation
- Hydraulic ready
- Equipped with 6" 4-way valve, check valve, final filter, oil level sight eyes, temperature and vacuum/pressure gauges
- Easy maintenance - equipped with removable side panels
- Easy accesses to the oil fill and drain ports
- Designed, built, and supported in the USA

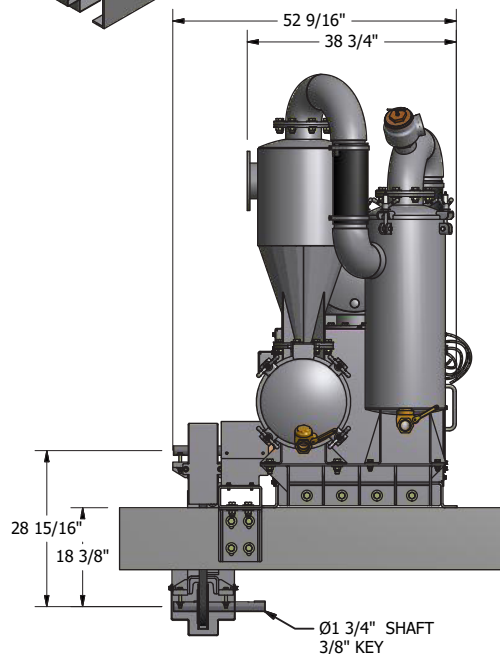
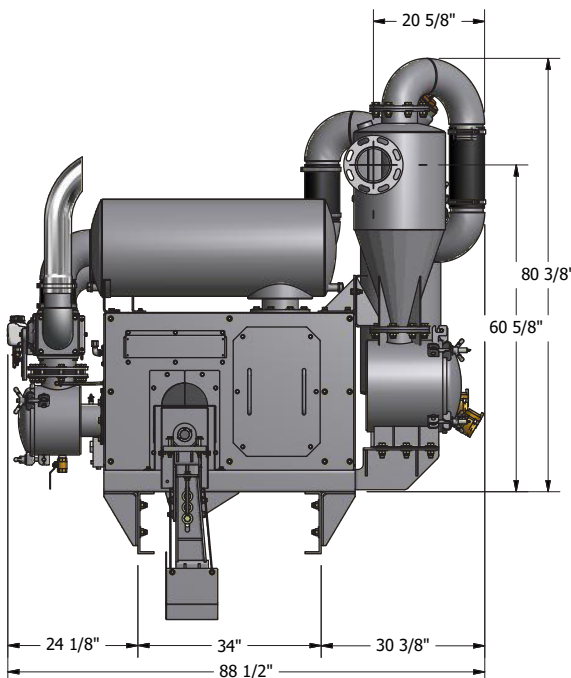
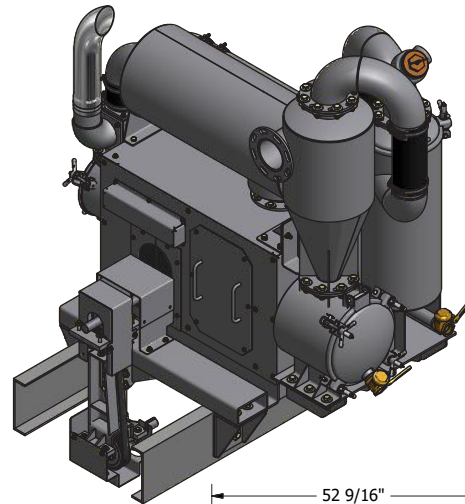
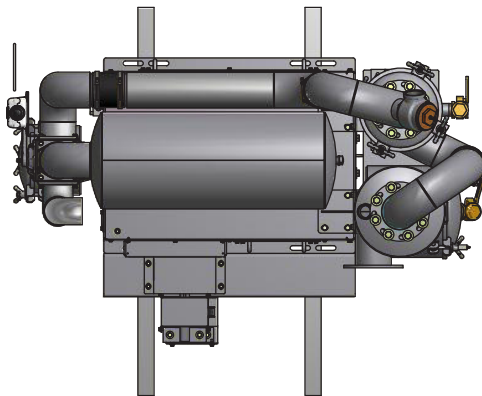


PRODUCT DESCRIPTION	PART NUMBER	WEIGHT	MSRP
1600 Top Mount Pro Package CW	147-1600-004	1904 lbs	\$20,085.00

1600 Packages Top Mount

Features

- Conveniently mounts to the truck frame
- Equipped with
 - 6" 4-Way Valve
 - Moisture Trap
 - Stainless Steel Final Filter
 - Air Ballast Silencer & Exhaust Silencer
 - Cyclonic Grit Ridder
 - 3" pressure relief valve set at 10 psi
 - Temperature and vacuum/pressure gauges
- Designed, built, and supported in the USA



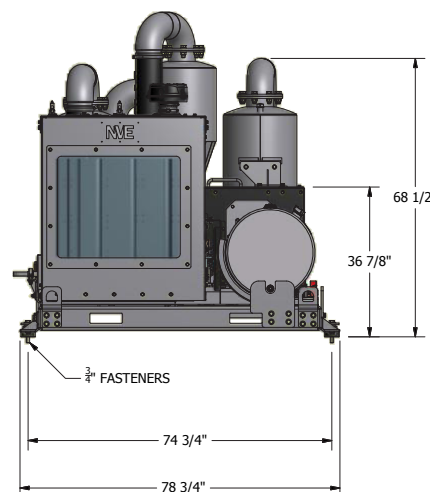
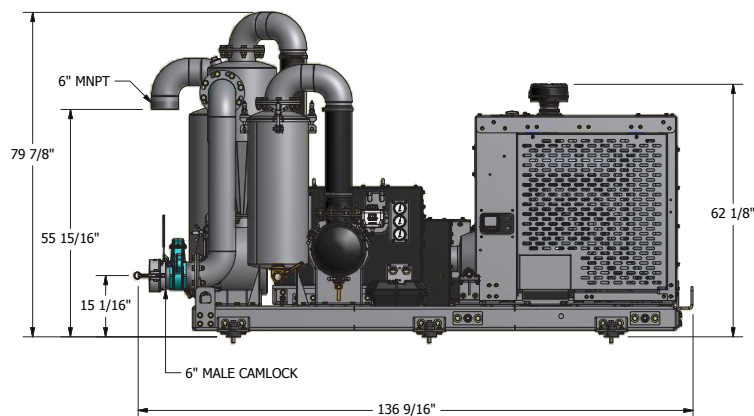
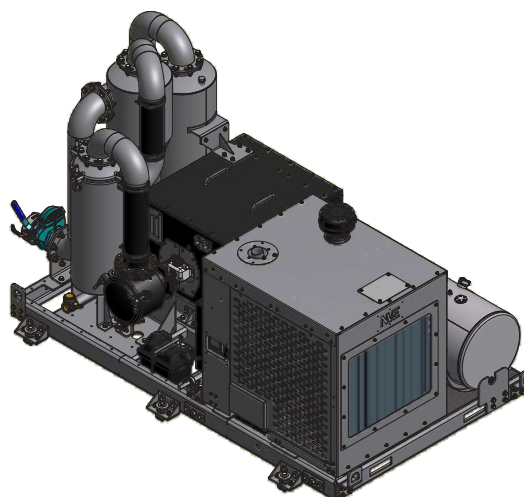
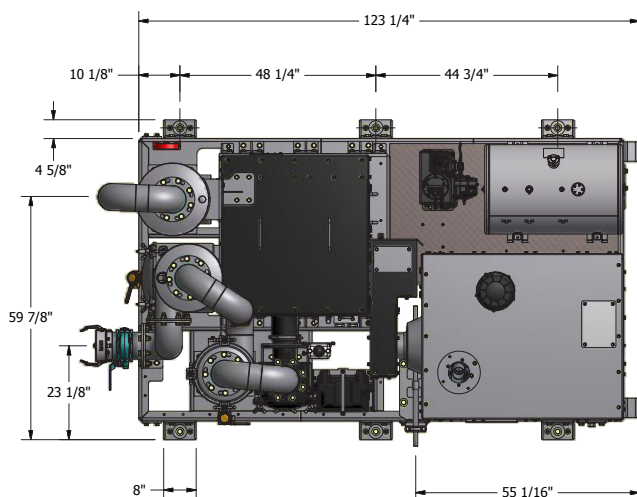
PRODUCT DESCRIPTION	PART NUMBER	WEIGHT	MSRP
1600 Enclosed Top Mount Belt Drive CW, High Shaft	147-1600-009	---	\$31,155.00
1600 Enclosed Top Mount Belt Drive CCW, Low Shaft (Pictured Above)	147-1600-010	---	\$31,155.00
1600 Enclosed Top Mount Hydraulic Drive CW	147-1600-011	---	\$24,255.00



1600 Packages Diesel Engine Drive Challenger Series

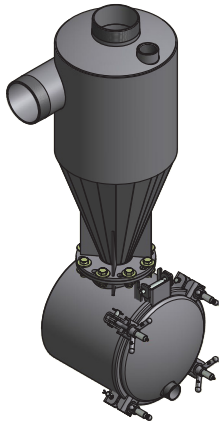
Features

- Convenient self contained trailer
- 125 HP John Deere 4 cycle diesel engine with control panel
- 100 gallon fuel tank
- Heavy duty battery
- Funk gear box and clutch with direct drive
- Solid 6" channel frame
- LED work lights
- Durable powder coat finish
- Designed, built, and supported in the USA

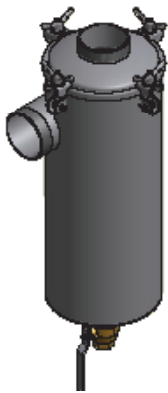


PRODUCT DESCRIPTION	PART NUMBER	WEIGHT	MSRP
1600 SCS EDR	147-1600-013	7900 lbs	CALL

1600 Components & Accessories



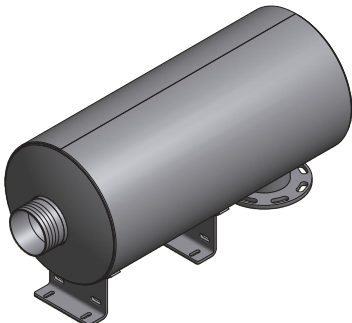
PRODUCT DESCRIPTION	PART NUMBER	WEIGHT	MSRP
Cyclone 2400	222-2400-1	327 lbs	\$1,531.40
<ul style="list-style-type: none"> - Cyclonic Action Removes Grit and Debris From Airflow - 6" Plumbing - Approximate dimensions - 17" x 21.5" x 60" 			



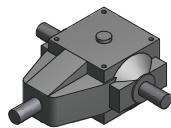
PRODUCT DESCRIPTION	PART NUMBER	WEIGHT	MSRP
Moisture Trap Carbon	216-250-6NPT-C	186 lbs	\$813.70
<ul style="list-style-type: none"> - 25 Gallon - 6" NPT - Approximate dimensions 19.81" x 18.75" x 47.43" 			



PRODUCT DESCRIPTION	PART NUMBER	WEIGHT	MSRP
Silencer	280-2029	317 lbs	\$2,060.00
<ul style="list-style-type: none"> - 18" Diameter - Side in Side Out Through 6" HB - 6" ANSI - Stainless Steel Internals - Approximate Dimensions - 48.25" x 25.75" 			



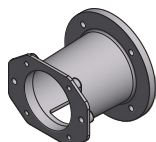
PRODUCT DESCRIPTION	PART NUMBER	WEIGHT	MSRP
Silencer	280-2030	291 lbs	\$2,008.50
<ul style="list-style-type: none"> - 18" Diameter - Right Angle 6" ANSI - 6" HB - Approximate Dimensions - 45.75" x 23" 			



PRODUCT DESCRIPTION	PART NUMBER	WEIGHT	MSRP
Gearbox 600 Series 2:1 Ratio	422-600-1	60.1 lbs	\$1,360.63



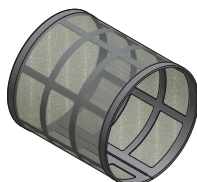
PRODUCT DESCRIPTION	PART NUMBER	WEIGHT	MSRP
Hub Rexnord E30-1.75" BORE	424-E30-175		\$355.35
Hub Rexnord E30-1.875" BORE	424-E30-1875		\$382.40
Element Rexnord E30	424-E30-ELE		\$394.95



PRODUCT DESCRIPTION	PART NUMBER	WEIGHT	MSRP
Hydraulic Adapter	150-466-003	7.2 lbs	\$175.10



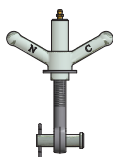
PRODUCT DESCRIPTION	PART NUMBER	WEIGHT	MSRP
Belt 36MM QTPCII 2000	430-200-016	1 lbs	\$263.68
Belt 36MM QTPCII 2240	430-200-032	2 lbs	\$352.00



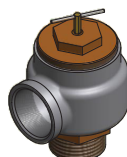
PRODUCT DESCRIPTION	PART NUMBER	WEIGHT	MSRP
Intake Filter 1600	150-314-008	4 lbs	\$70.00



PRODUCT DESCRIPTION	PART NUMBER	WEIGHT	MSRP
Thermometer Remote 200-400F 6' Copper 3/8" UNC Lead -Blower Exhaust	408-200-006	0.08 lbs	\$159.50
Gauge 2.5" Vac/Pres Liq Back Connection 1/4 NPT	408-200-007	0.45 lbs	\$68.20

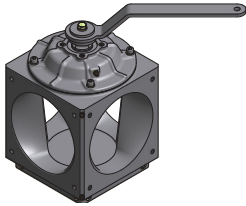


PRODUCT DESCRIPTION	PART NUMBER	WEIGHT	MSRP
Wingnut Assy: Wingnut Eyebolt Clevis Cotter, Pin. Sold in Sets of 6	284-KIT-C	1.45 lbs	\$135.96
Lubenut Assy: Lubenut, Eyebolt, Clevis, Cotter Pin. Sold in sets of 6	284-KIT-CLN	1.55 lbs	\$160.68



PRODUCT DESCRIPTION	PART NUMBER	WEIGHT	MSRP
Pressure Relief 3" 10 PSI	364-306-3	21.4 lbs	\$515.00

1600 Maintenance Items



PRODUCT DESCRIPTION	PART NUMBER	WEIGHT	MSRP
Valve 6" 4-Way Assy No Flanges	410-006-007	72 lbs	\$573.85
Handle For 4 Way Valve	412-060-005	1.45 lbs	\$15.45
Yellow Grip 1/4" Handle W/ Logo	120-060-002	0.05 lbs	\$2.01



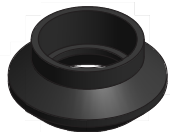
PRODUCT DESCRIPTION	PART NUMBER	WEIGHT	MSRP
Blower Package Flush Kit (Remote)	320-081-013	2 lbs	\$103.00
Diesel Tank Assy HDPE 1QT	320-082-003Z	0.60 lbs	\$43.80
Cap Plastic Diesel Tank	320-083-003	0.50 lbs	\$7.26
Oil Line BLK 1/4" ID 30R7 PER FT.	320-407-003	0.40	\$1.67



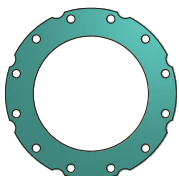
PRODUCT DESCRIPTION	PART NUMBER	WEIGHT	MSRP
Gasket 12" LID BUNA	286-706-12L	0.65 lbs	\$15.17
Gasket 14" LID BUNA	286-706-14L	0.80 lbs	\$18.00



PRODUCT DESCRIPTION	PART NUMBER	WEIGHT	MSRP
Float Ball 8" SS	414-800-SS	1.75 lbs	\$106.09



PRODUCT DESCRIPTION	PART NUMBER	WEIGHT	MSRP
Clamp Worm 6" Ball Seats	416-600-1WC	0.02 lbs	\$4.07
Ball Seat 6" Buna	416-600-B	1.65 lbs	\$51.50



PRODUCT DESCRIPTION	PART NUMBER	WEIGHT	MSRP
Gasket Ttma 6" Fiber	404-600-GF	0.10 lbs	\$12.15

Notes

Challenger Series



Designed. Built. Supported.

Produced in the USA | Distributed World-Wide

Proudly Distributed By:

**ARMSTRONG
EQUIPMENT
INC.**

NVE
National Vacuum Equipment

Challenger Series
VACUUM PUMPS & BLOWERS