

36" MANWAY (8 WING NUT)

- GASKET IN THE NECK DESIGN
- STANDARD NECK LENGTHS OF 6 OR 12 INCHES
- STURDY 8 WING NUT DESIGN



MANWAYS

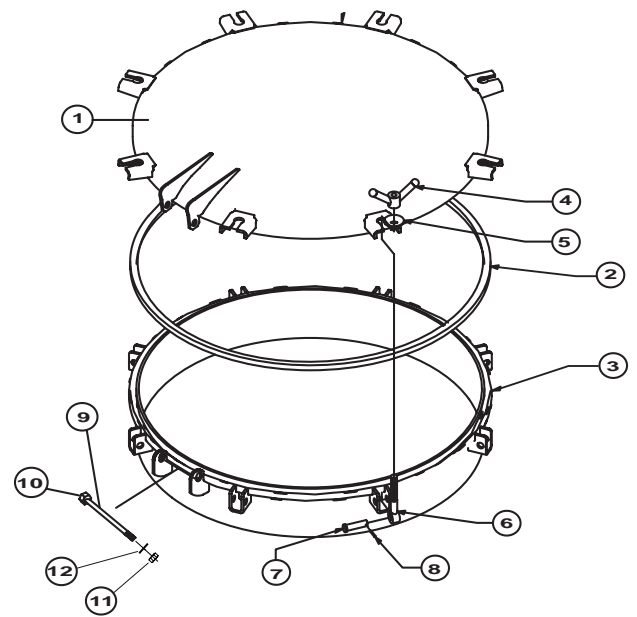
PART#	DESCRIPTION	WEIGHT
1012-0000	36" MANWAY WITH 6" NECK, 8 WING NUT LID, 1/4" BASE	131LBS
1013-0000	36" MANWAY WITH 12" NECK, 8 WING NUT LID, 1/4" BASE	167LBS

CALL FOR QUOTE ON STAINLESS STEEL VERSION

*SEE LIST OF OPTIONAL FITTINGS ON PGS 31, 38, & 51

36" MANWAY 6" NECK

#	PART#	DESCRIPTION
REPLACEMENT PARTS		
1	1012-0200	36" LID ASSEMBLY
2	1012-0005	36" SQ. GASKET (5/8" SQ. MATERIAL BUNA N)
3	1012-0206	36" BASE ASSEMBLY 6" NECK
4	1010-0001	WINGNUT
5	1010-0003	ZINC MANWAY WASHER
6	1021-0000-B	5/8X5" EYEBOLT
7	1021-0000-P	ZINC PLATED CLEVIS PIN
8	1021-0000-R	ZINC PLATED ROLL PIN
9	1000-0165-09	5/8" BOLT
10	1000-0113-01	5/8" STAINLESS STEEL FLATWASHER
11	1000-0171	5/8" HEX NUT
12	1000-0113	5/8" FLATWASHER



36" MANWAY 12" NECK

#	PART#	DESCRIPTION
REPLACEMENT PARTS		
1	1012-0200	36" LID ASSEMBLY
2	1012-0005	36" SQ. GASKET (5/8" SQ. MATERIAL BUNA N)
3	1012-0213	36" BASE ASSEMBLY 12" NECK
4	1010-0001	WINGNUT
5	1010-0003	ZINC MANWAY WASHER
6	1021-0000-B	5/8X5" EYEBOLT
7	1021-0000-P	ZINC PLATED CLEVIS PIN
8	1021-0000-R	ZINC PLATED ROLL PIN
9	1000-0165-09	5/8" BOLT
10	1000-0113-01	5/8" STAINLESS STEEL FLATWASHER
11	1000-0171	5/8" HEX NUT
12	1000-0113	5/8" FLATWASHER

