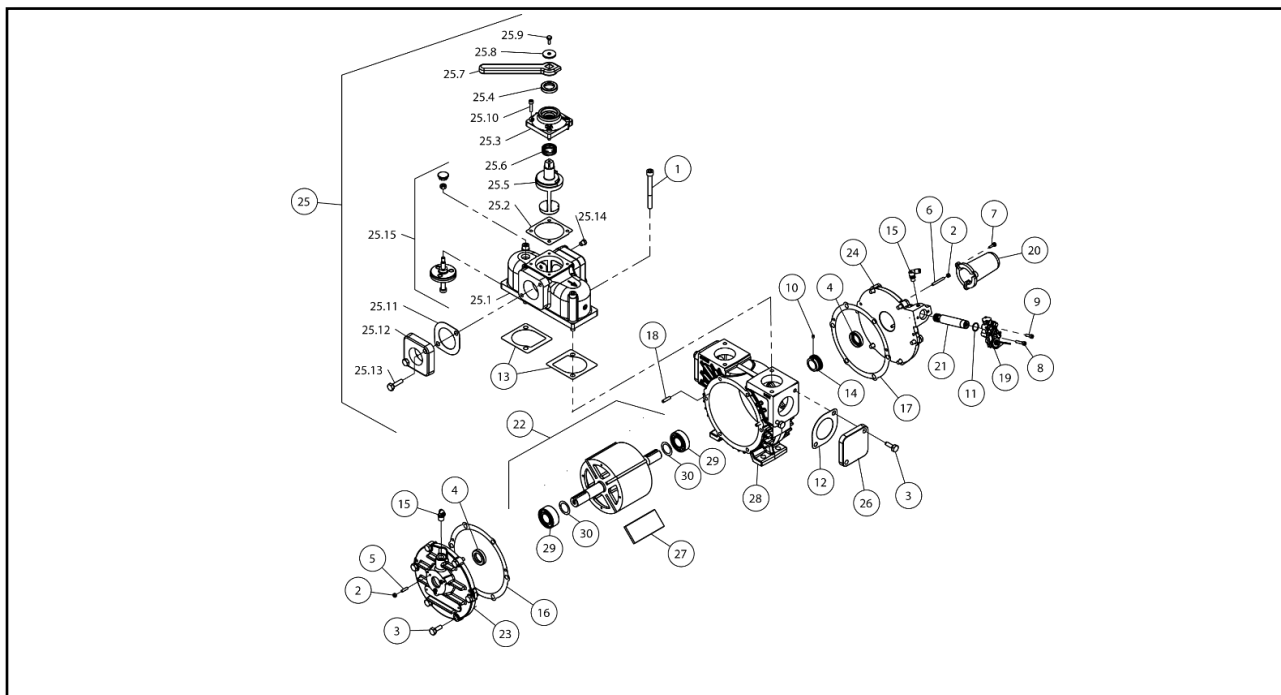


## HXL2V – Serial Number Q06128 and Greater.

Bearing and Oil Pump End Cover Changed at Q06128



Item	Description	Part No.	Qty
1	Screw M10 x 100	32200	4
2	Nut M5	220221	6
3	Screw M10 x 25	501569	16
4	Seal	501578	2
5	Screw M5 x 20	503225	3
6	Screw M5 x 40	503226	3
7	Screw M5 x 16	503227	3
8	Screw M5 x 25	504261	1
9	Screw M5 x 16	504262	1
10	Grub Screw M5 x 6	504264	1
11	O-Ring	504265	1
12	Flange Gasket	36202	2
13	Valve Gasket	568066	2
14	Gear Worm	568071	1
15	Elbow Swivel 1/4" **	568086	2
16	Shim Gasket 0.002"	575006	*
17	Shim Gasket 0.003"	575007	*
18	Dowel Pin	575111	4
19	Oil Pump	575366	1
20	Shaft Guard	675264	1
21	Drive Shaft Assembly	968045	1
22	Rotor Assembly	968126	1
23	End Cover	968242	1

Item	Description	Part No.	Qty
24	End Cover Oil Pump	969201	1
25	Valve Assembly	968350	1
25.1	Valve Body	968349	1
25.2	Valve Cap Gasket	568063	1
25.3	Valve Cap	968346	1
25.4	Seal	501578	1
25.5	Valve Spool	968341	1
25.6	Spool Spring	568347	1
25.7	Valve Handle	968055	1
25.8	Indicator Washer	569724	1
25.9	Screw M8 x 20	501848	1
25.10	Screw M6 x 25	11049	4
25.11	Flange Gasket	568009	2
25.12	Flange 1 1/2"	968159	2
25.13	Screw M10 x 35	501878	4
25.14	Plug 1/8"	143901	1
25.15	Poppet Assembly	968351	1
26	Flange Blank	975476	2
27	Vane Pack	975536	1
28	Cylinder	975536	1
29	Bearing	501577	2
30	Spacer	575131	2
31	Oil Line (Not Shown)	600293	1

\* Quantity may vary pump to pump

\*\* Pre-Serial Number P07044: Item 15 was 1 x 568086 - Elbow Swivel 1/4" & 1 x 568085 - Elbow Swivel 1/8"