

Inlet Filter

Function and Operation:

The Masport Inlet Filter is designed as the last line of defense for the Vacuum Pump. The filter element of the Inlet Filter prevents small particulate matter and items that float and may have bypassed the Primary and Secondary Trap from entering the Vacuum Pump

Due to the high air flow rates and rapid loading capabilities of the system, an Inlet Filter, in addition to both the Primary and Secondary Trap, is recommended.

To ensure effective pump protection from contaminate overflow it is recommended that filter element should be checked and cleaned, or replaced regularly.

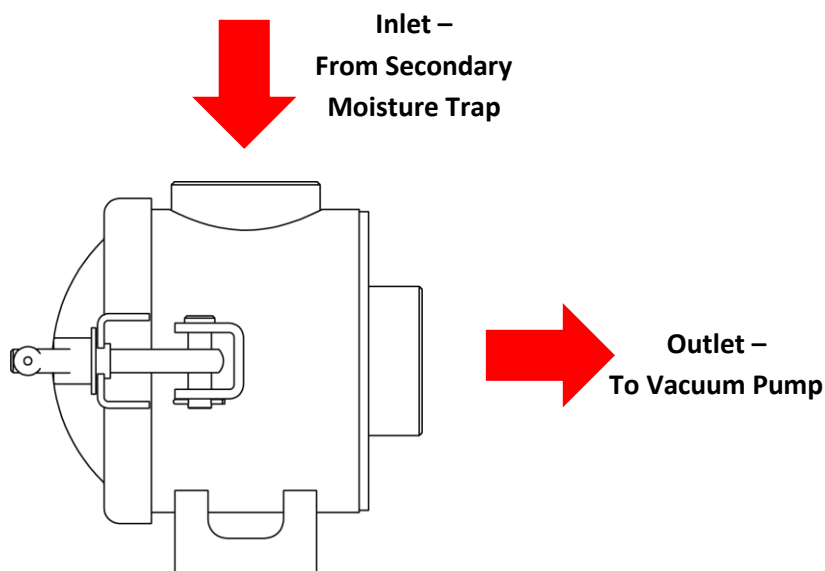
Positioning:

The Masport Inlet Filter can be mounted vertically or horizontally without losing its effectiveness. Although horizontal mounting is recommended to prevent debris potentially falling into the pump during filter element cleaning. It should also be mounted near enough to the operator to allow easy access for cleaning the filter element.

When determining the final location of the Inlet Filter, consideration should be given to the location of the Secondary Moisture Trap, and the location of the Vacuum Pump. By carefully considering the placement of these components before installation, a reduction in plumbing, maintenance and operation costs can be achieved.

Plumbing:

As shown in the Recommend System Component Diagram, the Inlet Filter has an inlet and an outlet. The inlet is on the side of the Secondary Moisture Trap and is to be plumbed to the Secondary Moisture Trap. The outlet is on the base of the Inlet Filter and is to be connected to the Vacuum Pump.



Whatever the configuration of the vacuum system on your truck or trailer, all components and plumbing must be of adequate size or the system will not operate correctly.



Warning! Do not use a hose smaller than porting size of the vacuum pump or the airflow will be restricted and the pump may overheat and be damaged.

Service:

A periodic check on the filter element is recommended. The frequency of inspection is dependent on variables such as type of material moved and the overall duty cycle of the system. As the filter element is a custom-made, pleated, stainless steel filter element with heat and oil resistant silicone seals it can be used repeatedly and does not need replacement until damaged. To clean wash with warm water and soap (do not use high pressure washers), from the inside of the filter element to the outside.

It is recommended to initially check every two to three months in order to establish an inspection program based on the characteristics specific to your individual application.



Warning! Do not attempt to remove the lid with pressure or vacuum on the system. Failure to do so could lead to equipment damage or catastrophic failure resulting in severe injury.

Lid Installation:

When replacing the lid, follow the below procedure:

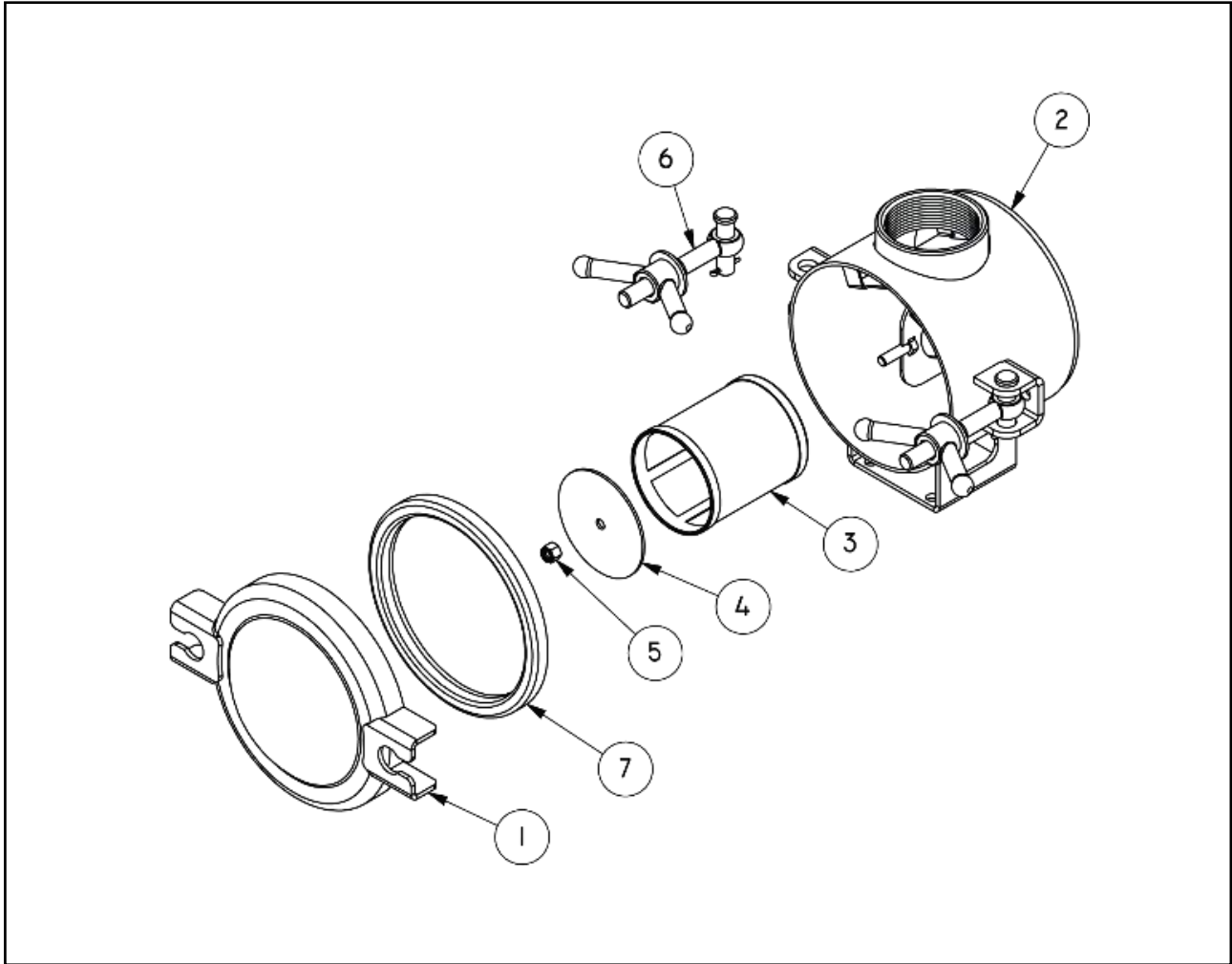
- ▶ Seat the lid onto the gasket and tighten the wingnuts.
- ▶ Start the vacuum pump and draw a vacuum on the tank
- ▶ As the vacuum increases in the tank external pressure will force the lid down. The wingnuts can then be tightened further as the lid has been pulled down into place by the vacuum.

This procedure will ensure a consistent pressure on the gasket.

Replacement Parts:

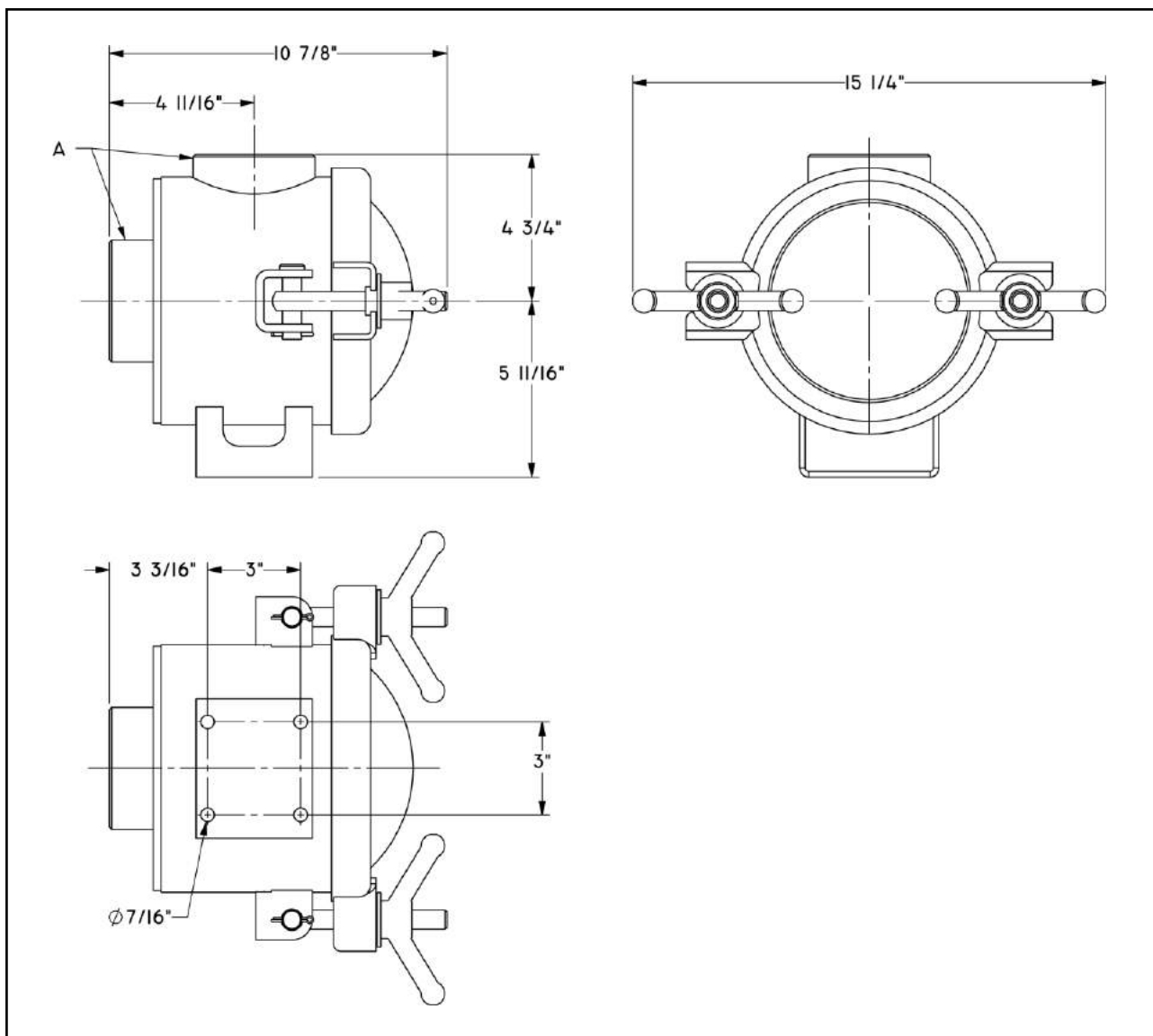
All replacement parts are readily available. Please contact an authorized Masport distributor or Masport directly.

Exploded View:



Ref	Description	1 1/2" NPT/BSP		3" NPT		3" BSP
		Painted 15134	OEM 15134-1	Painted 15133	OEM 15133-1	Painted 15135
1	Filter Lid	18117	18117-1	18117	18117-1	18117
2	Filter Body	18170	18170-1	18169	18169-1	18171
3	Filter Element	26130	26130	26130	26130	26130
4	Retainer	29245	29245	29245	29245	29245
5	Nut 1/2"	32005	32005	32005	32005	32005
6	Wingnut Assy	32608	32608	32608	32608	32608
7	Gasket	36516	36516	36516	36516	36516

Dimensional Data:



Ref	1 1/2" NPT/BSP		3" NPT		3" BSP
	Painted 15134	OEM 15134-1	Painted 15133	OEM 15133-1	Painted 15135
A	1 1/2" Female NPT/BSP	1 1/2" Female NPT/BSP	3" Female NPT	3" Female NPT	3" Female BSP

* OEM Versions Supplied Less Mounting Brackets