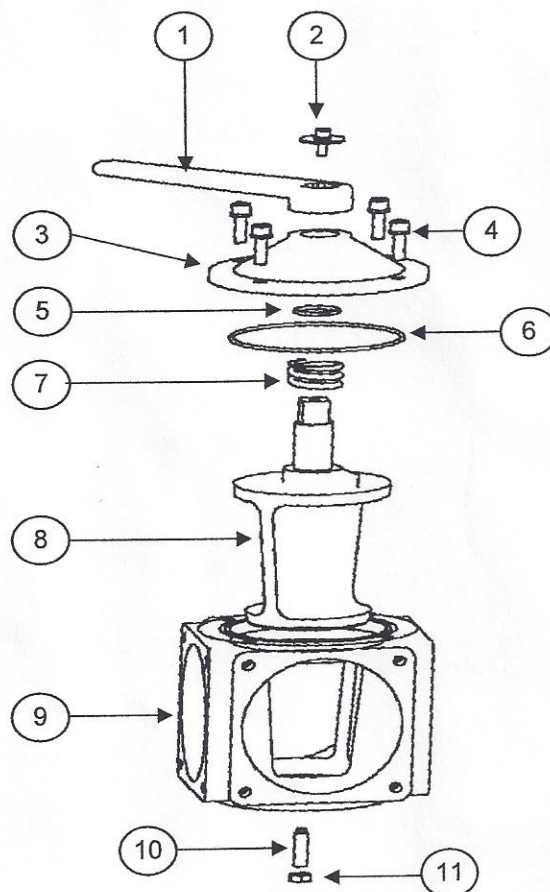


SUGGESTED LIST PRICES

January 2008

VACUUM PUMP ACCESSORIES

ITEM#	PART NUMBER	DESCRIPTION	LIST PRICE
	301FLA238	VALVE, 4-WAY - USED WITH RFL / RFW	\$435.50
1	300FLA345	HANDLE-USED WITH 4-WAY VALVE	\$47.91
2	CALL FACTORY	CAPSCREW AND WASHER FOR RFV HANDLE	CALL FACTORY
3	CALL FACTORY	COVER FOR WITTIG RFV	CALL FACTORY
4	CALL FACTORY	CAPSCREW AND WASHER FOR RFV COVER (4 REQ.)	CALL FACTORY
5	522001245	O-RING, STEM, BUNA, FOR 4" 4-WAY VALVE	\$4.46
6	522001244	O-RING, COVER, BUNA, FOR 4" 4-WAY VALVE	\$7.41
7	CALL FACTORY	SPRING FOR WITTIG RFV	CALL FACTORY
8	CALL FACTORY	INTERNAL VANE FOR WITTIG RFV	CALL FACTORY
9	CALL FACTORY	VALVE BODY FOR WITTIG RFV	CALL FACTORY
10	CALL FACTORY	TOGGLE SCREW FOR WITTIG RFV	CALL FACTORY
11	CALL FACTORY	SEAL NUT FOR WITTIG RFV	CALL FACTORY



Prices do not constitute an offer to sell. Suggested prices may change without notice. Prices do not include city, county, state or other applicable taxes. Prices are F.O.B. Louisville, KY. Minimum order charge \$75.00. Same day shipping subject to a \$50.00 processing charge. Cancelled orders are subject to a 15% restocking charge with a \$40.00 minimum fee. Weights are approximate shipping weights. Returned goods will not be accepted without a Returned Goods Authorization Number. All equipment must be returned freight prepaid. Standard "Conditions of Sales" apply.



Gardner Denver-Compressor Division
4601 Commerce Crossings Drive Ste. 200
Louisville, KY 40229
Phone: 800-626-6334 Fax: 502-266-5873