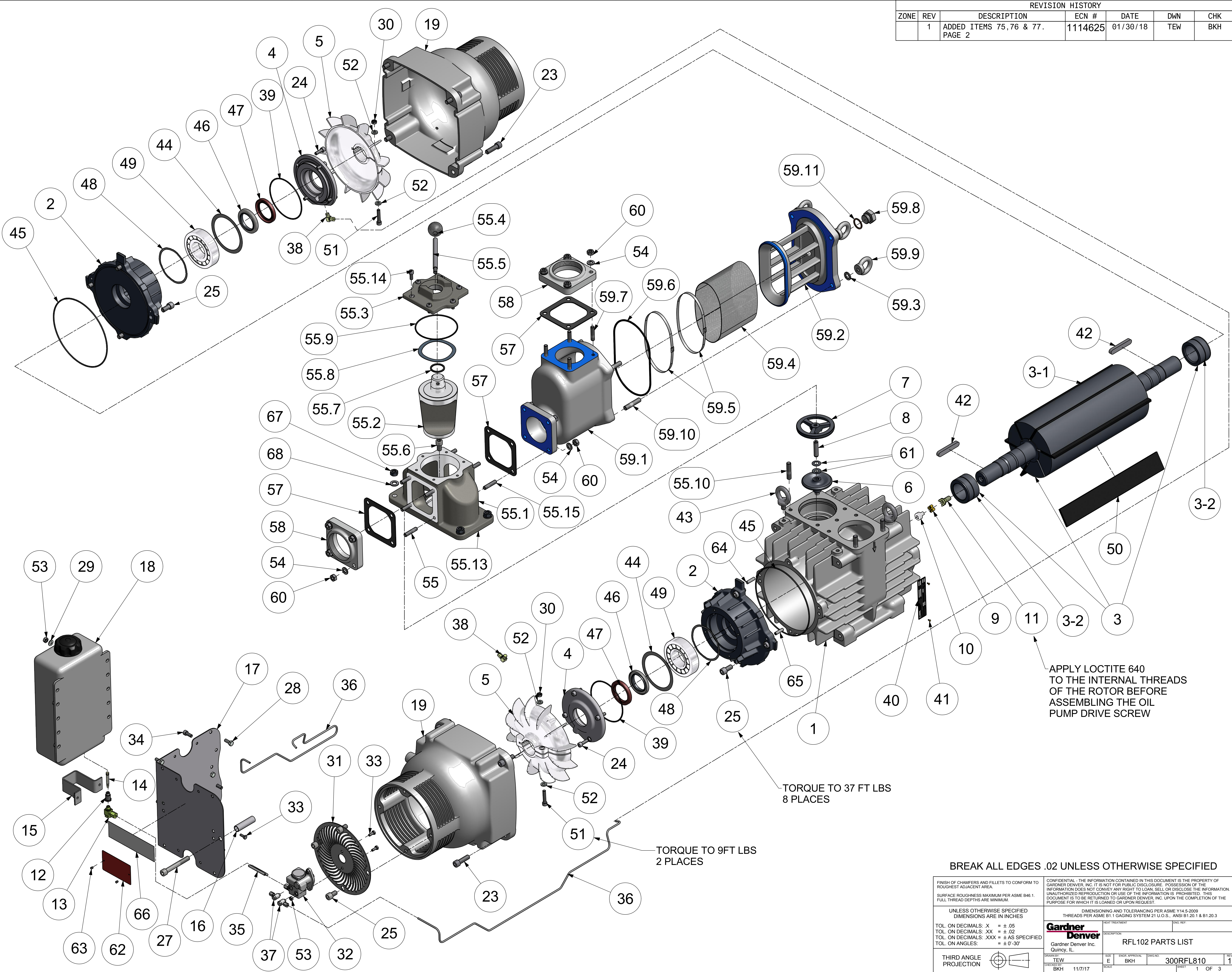


REVISION HISTORY						
ZONE	REV	DESCRIPTION	ECN #	DATE	DWN	CHK
	1	ADDED ITEMS 75, 76 & 77. PAGE 2	1114625	01/30/18	TEW	BKH



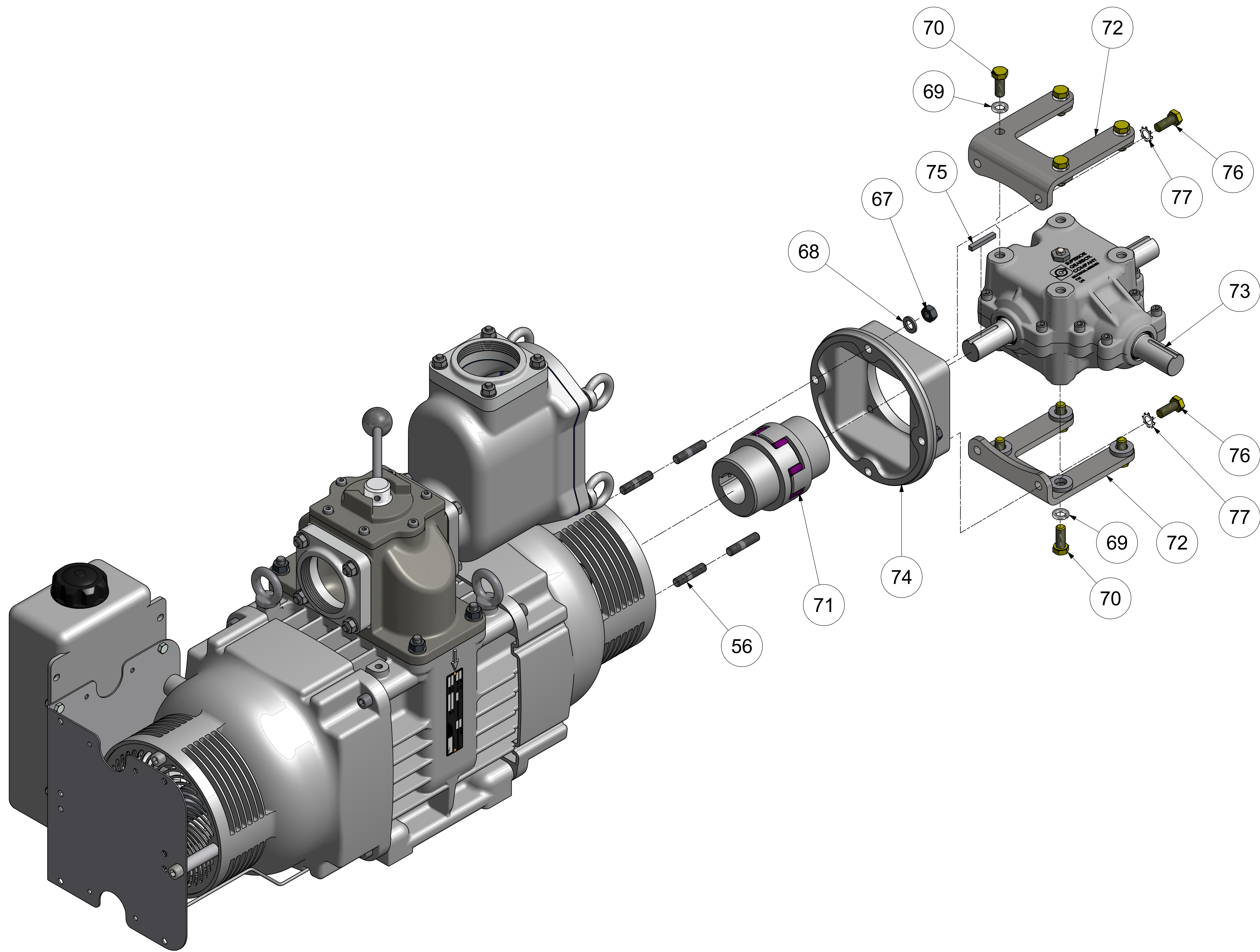
APPLY LOCTITE 640 TO THE INTERNAL THREADS OF THE ROTOR BEFORE ASSEMBLING THE OIL PUMP DRIVE SCREW

TORQUE TO 37 FT LBS 8 PLACES

TORQUE TO 9 FT LBS 2 PLACES

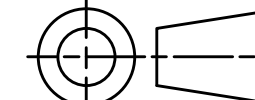

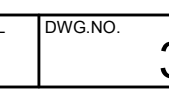
BREAK ALL EDGES .02 UNLESS OTHERWISE SPECIFIED

FINISH OF CHAMFERS AND FILLETS TO CONFORM TO ROUGHEST ADJACENT AREA.		CONFIDENTIAL - THE INFORMATION CONTAINED IN THIS DOCUMENT IS THE PROPERTY OF GARDNER DENVER, INC. IT IS NOT FOR PUBLIC DISCLOSURE. POSSESSION OF THE INFORMATION DOES NOT CONVEY ANY RIGHT TO LOAN, REPRODUCE, OR DISCLOSE THE INFORMATION. UNAUTHORIZED REPRODUCTION OR USE OF THE INFORMATION IS PROHIBITED. THIS DOCUMENT IS TO BE RETURNED TO GARDNER DENVER, INC. UPON THE COMPLETION OF THE PURPOSE FOR WHICH IT IS LOANED OR UPON REQUEST.	
SURFACE ROUGHNESS MAXIMUM PER ASME B46.1. FULL THREAD DEPTHS ARE MINIMUM.		DIMENSIONING AND TOLERANCING PER ASME Y14.5-2009. THREADS PER ASME B1.1 GAGING SYSTEM 21 U.O.S., ANSI B1.20.1 & B1.20.3.	
UNLESS OTHERWISE SPECIFIED DIMENSIONS ARE IN INCHES		HEAT TREATMENT	
TOL. ON DECIMALS: X = ±.05	TOL. ON DECIMALS: XX = ±.02	Gardner Denver Quincy, IL	
TOL. ON DECIMALS: XXX = ± AS SPECIFIED	TOL. ON ANGLES: = ± 0°-30'	RFL102 PARTS LIST	
THIRD ANGLE PROJECTION		DRWNS BY: TEW	REV 1
		CHECKED BY: BKH	300RFL810
		DATE: 11/7/17	1 OF 3



FINISH OF CHAMFERS AND FILLETS TO CONFORM TO ROUGHEST ADJACENT AREA. SURFACE ROUGHNESS MAXIMUM PER ASME B46.1. FULL THREAD DEPTHS ARE MINIMUM.		CONFIDENTIAL - THE INFORMATION CONTAINED IN THIS DOCUMENT IS THE PROPERTY OF GARDNER DENVER, INC. IT IS NOT FOR PUBLIC DISCLOSURE. POSSESSION OF THE INFORMATION DOES NOT CONVEY ANY RIGHT TO LOAN, SELL, OR DISCLOSE THE INFORMATION. UNAUTHORIZED REPRODUCTION OR USE OF THE INFORMATION IS PROHIBITED. THIS DOCUMENT IS TO BE RETURNED TO GARDNER DENVER, INC. UPON THE COMPLETION OF THE PURPOSE FOR WHICH IT IS LOANED OR UPON REQUEST.	
UNLESS OTHERWISE SPECIFIED DIMENSIONS ARE IN INCHES TOL. ON DECIMALS: X = ± .05 TOL. ON DECIMALS: XX = ± .02 TOL. ON DECIMALS: XXX = ± AS SPECIFIED TOL. ON ANGLES: = ± 0°-30'		DIMENSIONING AND TOLERANCING PER ASME Y14.5-2009 THREADS PER ASME B1.1 GAGING SYSTEM 21 U.O.S., ANSI B1.20.1 & B1.20.3	
THIRD ANGLE PROJECTION		HEAT TREATMENT: _____ ENG. REF: _____ <b>Gardner Denver</b> Gardner Denver Inc. Quincy, IL.	
DRAWN BY: TEW CHECKED BY: _____		DESCRIPTION: RFL102 PARTS LIST SIZE: E ENGR. APPROVAL: _____ SCALE: _____ SHEET: 2 OF 3	
		REV: 1 300RFL810	

PARTS LIST			
BALLOON NUMBER	DESCRIPTION	QTY	PART NUMBER
1	Body Casing	1	3050003635-2
2	Side Plate	2	TW96100400
3	Rotor Assembly	1	TW96102700
3-1	Rotor	1	TW96102700-3
3-2	Sleeve	2	TW96102400
4	Bearing Cap	2	TW98230700
5	Fan	2	TW98226100
6	Valve Plate	1	TW99352600
7	Guide Plate	1	TW99355500
8	Dowel Pin	1	8600003728-2
9	Ring Gear	1	TW34109000
10	Half Coupling	1	TW34109200
11	Driver Screw	1	TW96101200
12	Adaptor	1	3860003696-2
13	Coupling	1	TW42628800
14	Oil Strainer	1	3310003725-2
15	Pipe Guard	1	3840003695-2
16	Spacer	1	TEN007578
17	Bracket	1	3120003694-2
18	Oil Tank	1	3900003724-2
19	Cowl	2	3210003712-2
21	Screw	4	TW44503000
23	Screw	8	665SMCA12040Z
24	Screw	8	TW44505300
25	Screw	12	TW44509200
27	Screw	1	665HMCA12090Z
28	Set Screw	4	TST000098
29	Washer	4	670FPHN08Z
30	Nut	4	TW45019000
31	Grill	1	3840003721-2
32	Oil Pump	1	3590003726-2
33	Set Screw	4	TW44503100
34	Screw	2	665SMCA08016Z
35	Tube	.25M	VP1136479
36	Tube	1.75M	VP1136478
37	Elbow	2	TW42623900
38	Elbow	2	TW42516900
39	O-ring	2	TW46365900
40	Label	1	TEN007748
41	Screw	2	75LM199
42	Key	2	TW45452000
43	Eyebolt	2	TW44480200
44	Shim	2	TW45187900
45	O-ring	2	TW46368600
46	Seal	2	TW46105600
47	Seal	2	TW46105400
48	Washer	2	TW45169900
49	Bearing	2	TW41122900
50	Blade	6	TW34278100
51	Screw	2	TW44505600
52	Washer	4	TW45159900
53	Nut	2	668RMCA06Z
54	Washer	12	670FPHR10Z
55	Valve	1	5000003673-2
55.1	Valve Body	1	5050003671-2
55.2	Cone	1	5930003677-2
55.3	Valve Cover	1	5200003675-2
55.4	Ball	1	TW44984200
55.5	Lever	1	8460003891-2
55.6	Screw	1	M450127025-9
55.7	O-ring	1	6740003716-2
55.8	Washer	1	7930003890-2
55.9	O-ring	1	6741200600-2
55.10	Stud	4	A93024070
55.11	Washer	4	670FPHR12Z
55.12	Nut	4	668RMCA12Z
55.13	Gasket	1	5350003678-2
55.14	Screw	6	665SMCA08020Z
55.15	Stud	8	M570107035-2
56	Stud	4	A93024070
57	Gasket	3	5350003685-2
58	Flange	2	CC1157311
59	Filter	1	6280003742-2
59.1	Filter Body	1	8330003737-2
59.2	Filter Cover	1	8840003741-2
59.3	Washer	4	670FPHR12Z
59.4	Filter Mesh	1	6320003748-2
59.5	Hose Clamp	2	7460001559-2
59.6	O-ring	1	6740001011-2
59.7	Stud	4	M570107035-2
59.8	Plug	1	H70420002402
59.9	Eye Nut	4	M360127000-8
59.10	Stud	4	M570127040-2
60	Nut	12	668RMCA10Z
61	Washer	2	7920700241-2
62	Oil Label	1	6710003856-2
63	Rivet	2	A93179020
64	Pin	1	TW44901900
65	Taper Pin	1	TW44843100
66	Logo Decal	1	TEN003378
67	Nut	8	668RMCA12Z
68	Washer	8	670FPHR12Z
69	Washer	8	95W2
70	Screw	8	655EE06Z
71	Coupling	1	TEN006479
72	Bracket	2	TEN006478
73	Gearbox	1	300FWA449
74	Trunk	1	4000003713-2
75	KEY	1	35B33
76	SCREW	4	665HMCA12030Z
77	WASHER	4	95H5

FINISH OF CHAMFERS AND FILLETS TO CONFORM TO ROUGHEST ADJACENT AREA. SURFACE ROUGHNESS MAXIMUM PER ASME B46.1. FULL THREAD DEPTHS ARE MINIMUM.		CONFIDENTIAL - THE INFORMATION CONTAINED IN THIS DOCUMENT IS THE PROPERTY OF GARDNER DENVER, INC. IT IS NOT FOR PUBLIC DISCLOSURE. POSSESSION OF THE INFORMATION DOES NOT CONVEY ANY RIGHT TO LOAN, SELL OR DISCLOSE THE INFORMATION. UNAUTHORIZED REPRODUCTION OR USE OF THE INFORMATION IS PROHIBITED. THIS DOCUMENT IS TO BE RETURNED TO GARDNER DENVER, INC. UPON THE COMPLETION OF THE PURPOSE FOR WHICH IT IS LOANED OR UPON REQUEST.	
UNLESS OTHERWISE SPECIFIED DIMENSIONS ARE IN INCHES TOL. ON DECIMALS: X = ± .05 TOL. ON DECIMALS: XX = ± .02 TOL. ON DECIMALS: XXX = ± AS SPECIFIED TOL. ON ANGLES: = ± 0°-30'		DIMENSIONING AND TOLERANCING PER ASME Y14.5-2009 THREADS PER ASME B1.1 GAGING SYSTEM 21 U.O.S., ANSI B1.20.1 & B1.20.3	
THIRD ANGLE PROJECTION 		 <b>RFL102 PARTS LIST</b> Quincy, IL.	
DRAWN BY: TEW CHECKED BY:	SIZE: E SCALE:	ENGR. APPROVAL:  DWNLD: 300RFL810	REV: 1 SHEET: 3 OF 3