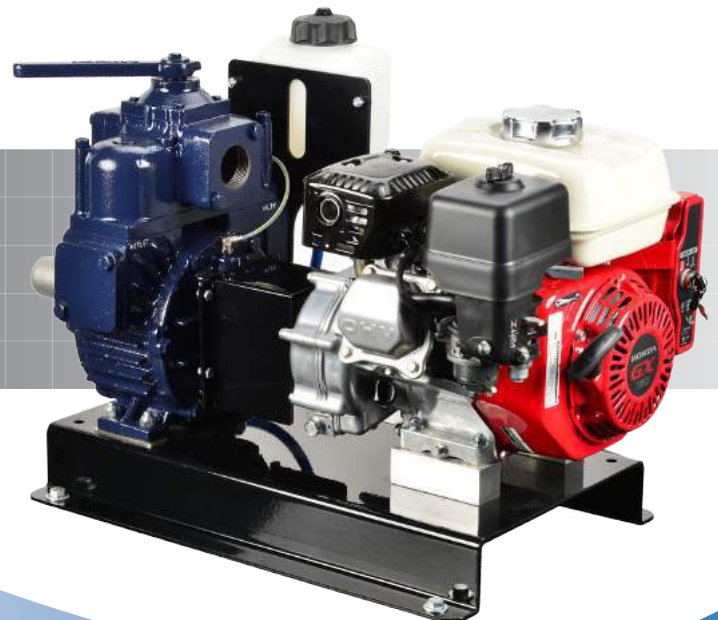


# Slide-In Tank Product Range

Masport have been manufacturing vacuum/pressure pumps and systems for over 100 years, so you can be sure of engineering excellence.

With a wide selection of pumps, systems and components specifically designed and engineered for the Slide-in Tank Market, we can ensure that we have your pumping needs covered.

All products are factory tested before shipping and are backed up by a one year warranty against all manufacturing defects. With Masport on board you have an efficient and reliable pump and system backed by the best service and support that has made Masport the #1 choice for pumpers worldwide.



# HXL2 Pump • 75 CFM DISPLACEMENT



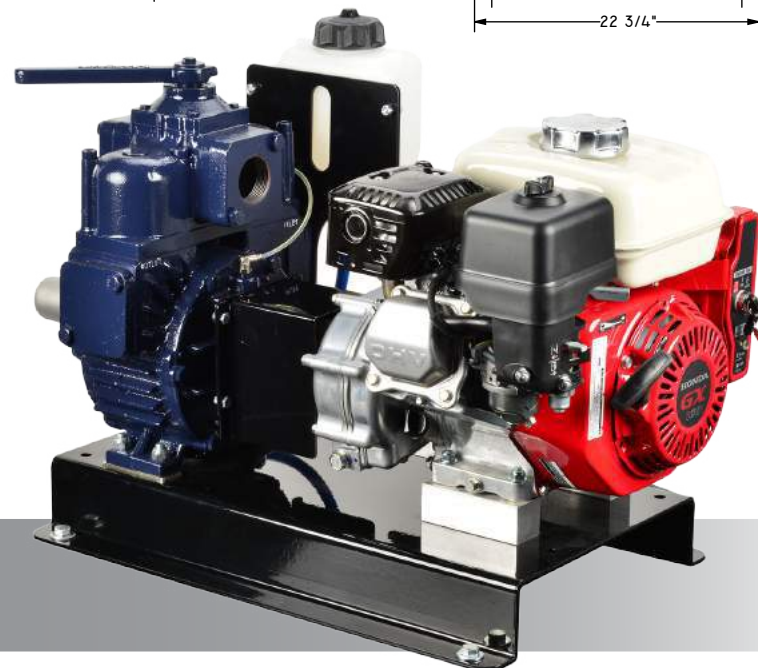
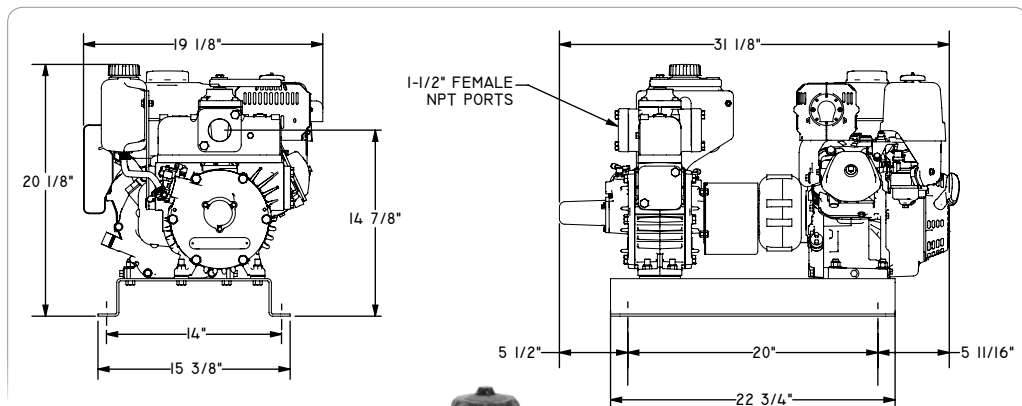
## Features and benefits

- ▶ Achieve minimum 27" Hg (Intermittent)
- ▶ Available in both vacuum/pressure or vacuum only models
- ▶ Heavy duty bearings
- ▶ Viton oil seals for longer service life
- ▶ Kevlar vanes are heat stabilized and machined with exacting tolerances for superior ruggedness and durability
- ▶ Superior pump life
- ▶ Mechanical oil pump with automatic oiling – no adjustment required
- ▶ Durable translucent high temperature oil lines – allows visible flow of oil to the pump
- ▶ End Thrust Protection prevents rotor to-endcover contact
- ▶ 1/4" NPT vane flush port
- ▶ Double end shaft accommodates clockwise or counter-clockwise drive systems
- ▶ Easy to service
- ▶ One-year performance warranty

## Pro Pack 750

### Features and benefits

- ▶ Designed for tank sizes up to 750 Gallons
- ▶ Available in 5.5 Hp and 9 Hp Honda Engines
- ▶ 20" HG Continuous Duty
- ▶ 5–10 PSI Continuous Duty
- ▶ Electric Start
- ▶ 2:1 Direct Drive Gearbox – no belts to squeal, slip or replace
- ▶ Integrated Oil Reservoir
- ▶ Built-in centrifugal clutch – allows for better horsepower transfer and the engine to idle without having the pump running
- ▶ Available in both vacuum/pressure or vacuum only model
- ▶ One-year performance warranty

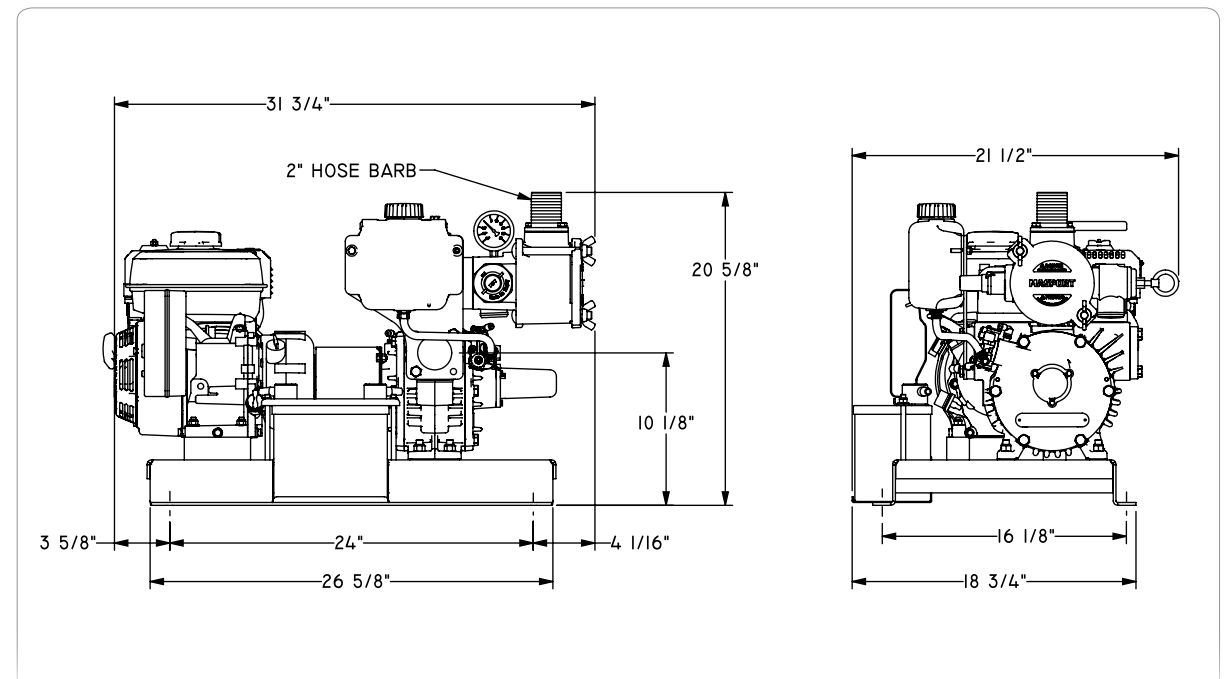


# HXL2 EZ Plumb 750



## Features and benefits

- ▶ Designed for tank sizes up to 750 Gallons
- ▶ Available in 5.5 Hp and 9 Hp Honda Engines
- ▶ 76 CFM HXL2V Pump
- ▶ 20" Hg Continuous Duty
- ▶ 5-10 PSI Continuous Duty
- ▶ Electric Start
- ▶ 2:1 Direct Drive Gearbox - no belts to squeal, slip or replace
- ▶ Integrated Oil Reservoir
- ▶ Integrated Vacuum and Pressure Relief Valves
- ▶ Integrated Vacuum/Pressure Gauge
- ▶ Integrated Battery
- ▶ Integrated Pre-Filter with washable stainless steel element
- ▶ 2" Hose Barb Connection - plumb directly to your RIV or Metaltecnica Scrubber
- ▶ Built-in Centrifugal Clutch - allows for better horsepower transfer and the engine to idle without having the pump running
- ▶ One-year performance warranty



# HXL3 Pump • 112 CFM DISPLACEMENT



## Features and benefits

- ▶ Achieve minimum 27" Hg (Intermittent)
- ▶ Available in both vacuum/pressure or vacuum only models
- ▶ Heavy duty bearings
- ▶ Viton oil seals for longer service life
- ▶ Kevlar vanes are heat stabilized and machined with exacting tolerances for superior ruggedness and durability
- ▶ Superior pump life
- ▶ Mechanical oil pump with automatic oiling – no adjustment required
- ▶ Durable translucent high temperature oil lines – allows visible flow of oil to the pump
- ▶ End Thrust Protection prevents rotor to-endcover contact
- ▶ 1/4" NPT vane flush port
- ▶ Double end shaft accommodates clockwise or counter-clockwise drive systems
- ▶ Easy to service
- ▶ One-year performance warranty

# HXL3 EZ Plumb 1000



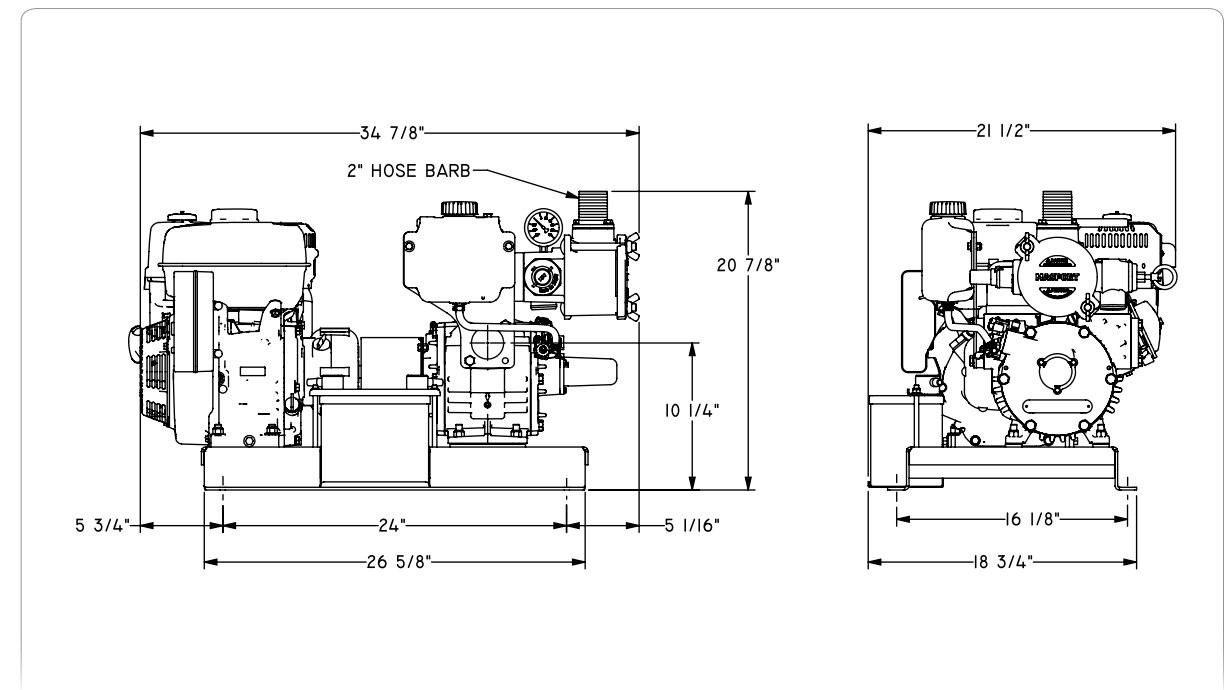
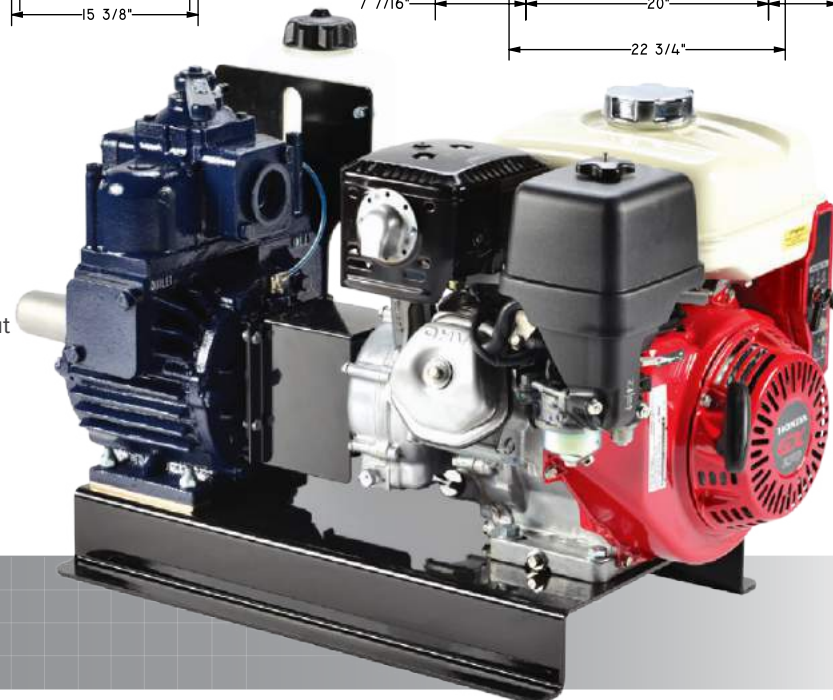
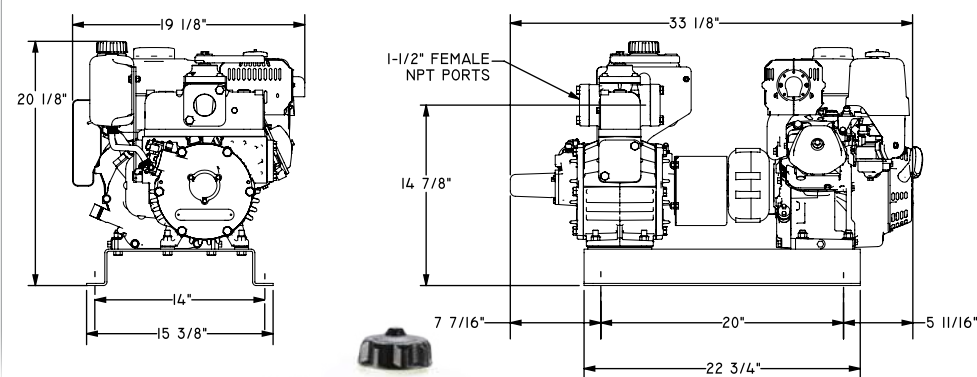
## Features and benefits

- ▶ Designed for tank sizes up to 1000 Gallons
- ▶ Made with a 9 Hp Honda Engine
- ▶ 112 CFM HXL3V Pump
- ▶ 20" Hg Continuous Duty
- ▶ 10 PSI Continuous Duty
- ▶ Electric Start
- ▶ 2:1 Direct Drive Gearbox - no belts to squeal, slip or replace
- ▶ Integrated Oil Reservoir
- ▶ Integrated Vacuum and Pressure Relief Valves
- ▶ Integrated Vacuum/Pressure Gauge
- ▶ Integrated Battery
- ▶ Integrated Pre-Filter with washable stainless steel element
- ▶ 2" Hose Barb Connection - plumb directly to your RIV or Metaltecnica Scrubber
- ▶ Built-in Centrifugal Clutch - allows for better horsepower transfer and the engine to idle without having the pump running
- ▶ One-year performance warranty

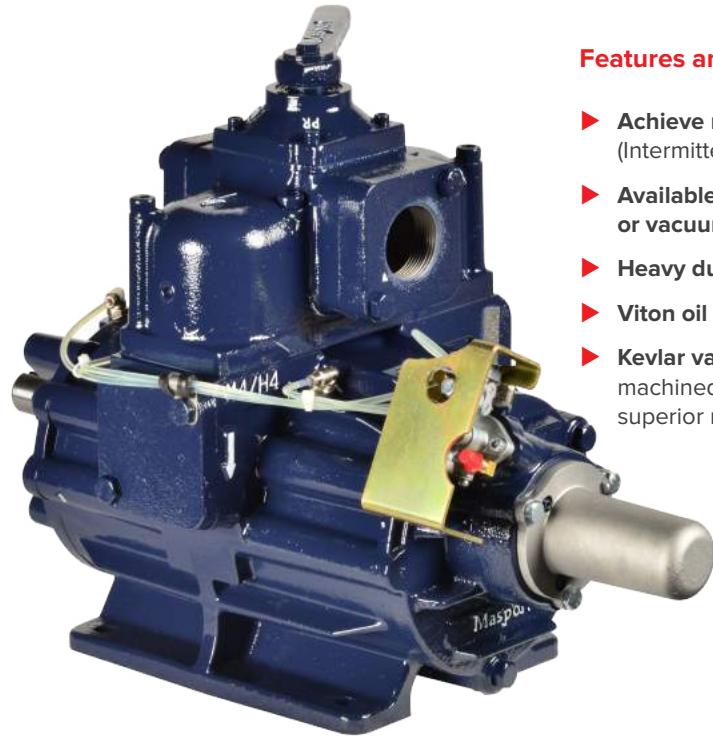
## Pro Pack 1000

### Features and benefits

- ▶ Designed for tank sizes up to 1000 Gallons
- ▶ Made with a 9 Hp Honda Engine
- ▶ 20" HG Continuous Duty
- ▶ 10 PSI Continuous Duty
- ▶ Electric Start
- ▶ 2:1 Direct Drive Gearbox – no belts to squeal, slip or replace
- ▶ Integrated Oil Reservoir
- ▶ Built-in centrifugal clutch – allows for better horsepower transfer and the engine to idle without having the pump running
- ▶ Available in both vacuum/pressure or vacuum only model
- ▶ One-year performance warranty



# HXL4 Pump • 165 CFM DISPLACEMENT



## Features and benefits

- ▶ Achieve minimum 27" Hg (Intermittent)
- ▶ Available in both vacuum/pressure or vacuum only models
- ▶ Heavy duty bearings
- ▶ Viton oil seals for longer service life
- ▶ Kevlar vanes are heat stabilized and machined with exacting tolerances for superior ruggedness and durability
- ▶ Superior pump life
- ▶ Mechanical oil pump with automatic oiling – no adjustment required
- ▶ Durable translucent high temperature oil lines – allows visible flow of oil to the pump
- ▶ End Thrust Protection prevents rotor-to-endcover contact
- ▶ 1/4" NPT vane flush port
- ▶ Double end shaft accommodates clockwise or counter-clockwise drive systems
- ▶ O-Ring Endcovers eliminates air or oil leakages
- ▶ Easy to service
- ▶ One-year performance warranty

# HXL4V EZ Muff 1500



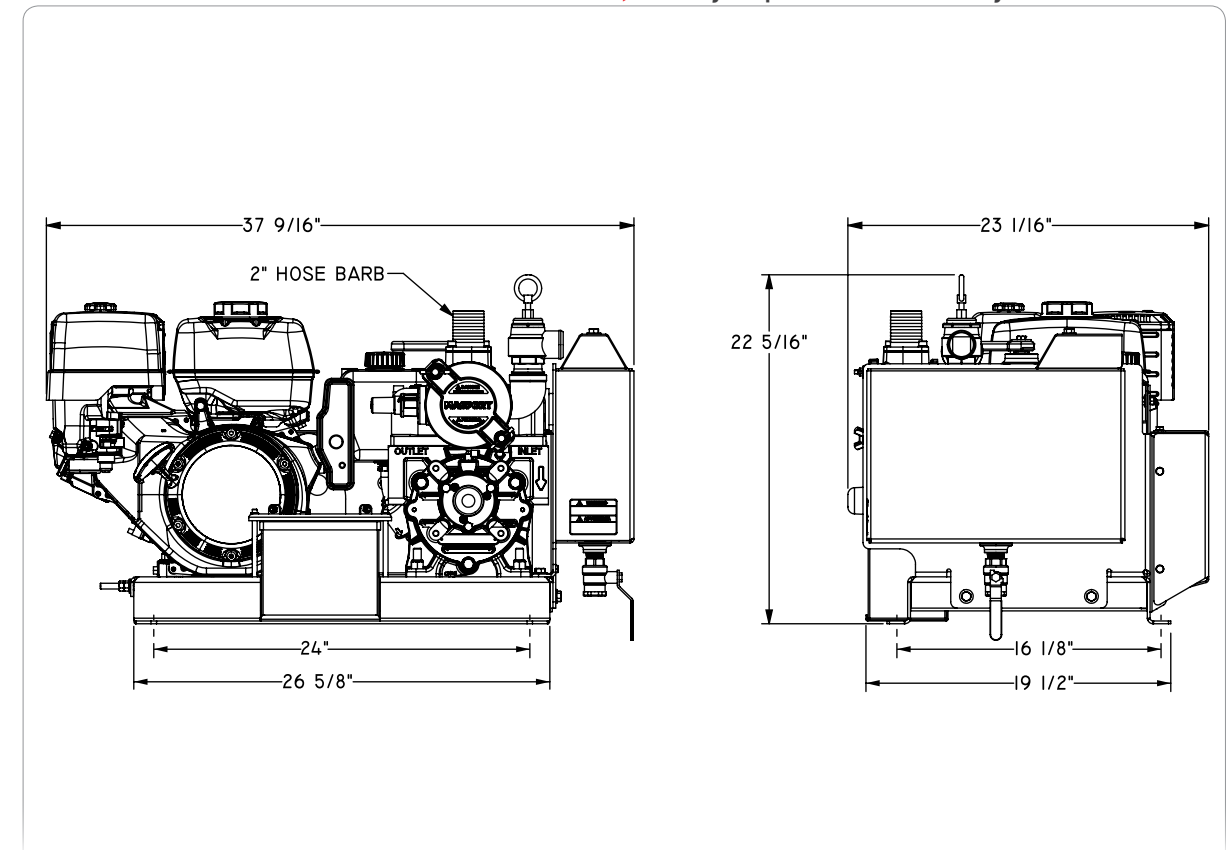
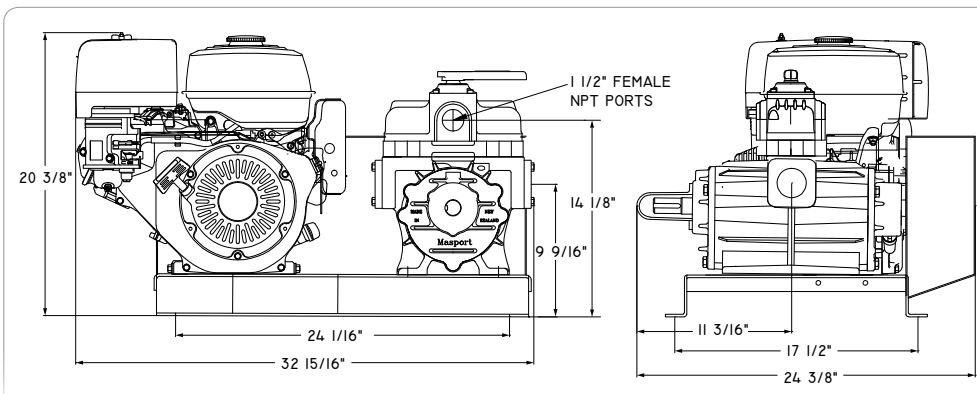
## Features and benefits

- ▶ Designed for tank sizes up to 1500 Gallons
- ▶ Made with a 13 Hp Honda Engines
- ▶ 165 CFM HXL4V Pump
- ▶ 20" Hg Continuous Duty
- ▶ 15 PSI Continuous Duty
- ▶ Electric Start
- ▶ Integrated Belt Guard - fully enclosing all moving parts for safety
- ▶ Integrated Oil Reservoir
- ▶ Integrated Vacuum and Pressure Relief Valves
- ▶ Integrated Vacuum/Pressure Gauge
- ▶ Integrated Oil Separator/Muffler
- ▶ Integrated Battery
- ▶ Integrated Pre-Filter with washable stainless steel element
- ▶ 2" Hose Barb Connection - plumb directly to your RIV or Metaltecnica Scrubber
- ▶ One-year performance warranty

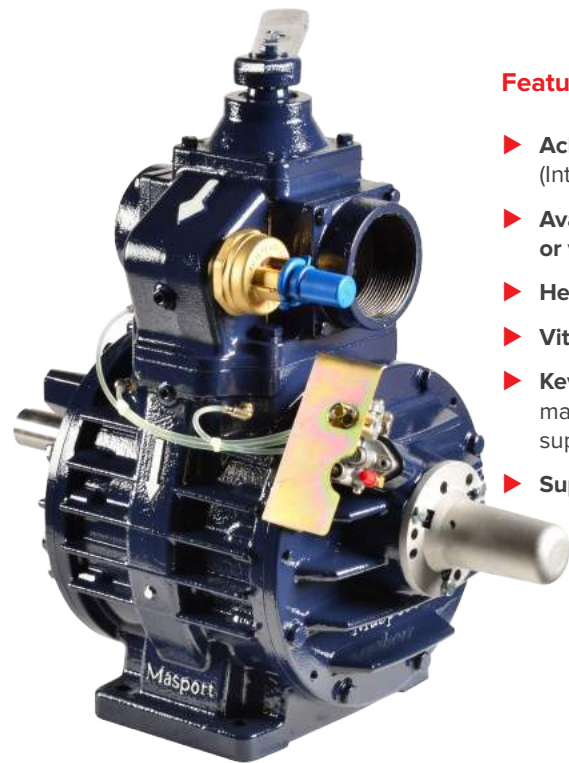
## Pro Pack 1500

### Features and benefits

- ▶ Designed for tank sizes up to 1500 Gallons
- ▶ Made with a 9 Hp Honda Engine
- ▶ Available with 9 Hp Diesel Kubota Engine on request
- ▶ 20" HG Continuous Duty
- ▶ 5–15 PSI Continuous Duty
- ▶ Electric Start
- ▶ Integrated Belt Guard – fully enclosing all moving parts for safety
- ▶ Available in both vacuum/pressure or vacuum only model
- ▶ One-year performance warranty



# HXL75 Pump • 230 CFM DISPLACEMENT



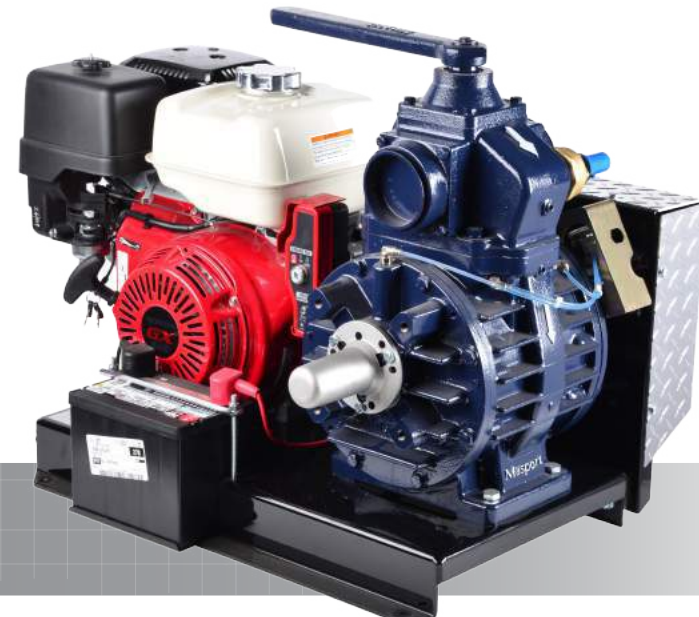
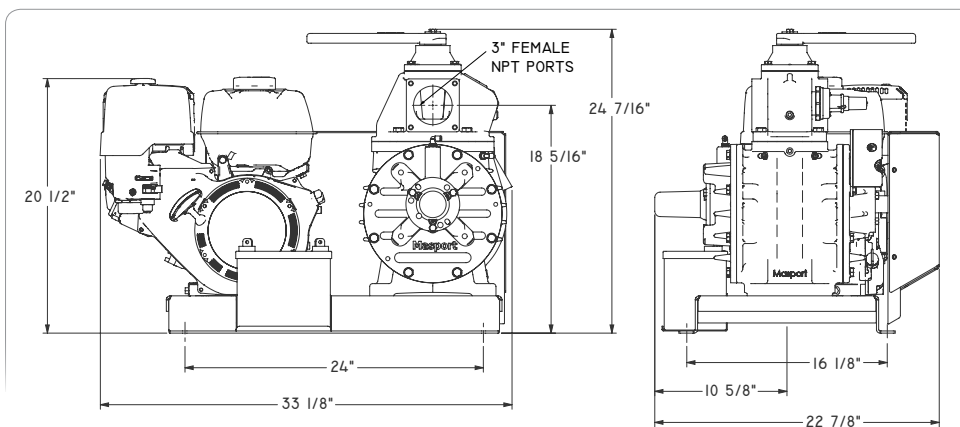
## Features and benefits

- ▶ Achieve minimum 27" Hg (Intermittent)
- ▶ Available in both vacuum/pressure or vacuum only models
- ▶ Heavy duty bearings
- ▶ Viton oil seals for longer service life
- ▶ Kevlar vanes are heat stabilized and machined with exacting tolerances for superior ruggedness and durability
- ▶ Superior pump life
- ▶ Mechanical oil pump with automatic oiling – no adjustment required
- ▶ Durable translucent high temperature oil lines – allows visible flow of oil to the pump
- ▶ End Thrust Protection prevents rotor-to-endcover contact
- ▶ 1/4" NPT vane flush port
- ▶ Integral vacuum relief
- ▶ Double end shaft accommodates clockwise or counter-clockwise drive systems
- ▶ O-Ring Endcovers eliminates air or oil leakages
- ▶ Easy to service
- ▶ One-year performance warranty

## Pro Pack 2500

### Features and benefits

- ▶ Designed for tank sizes up to 2500 Gallons
- ▶ Made with a 13 Hp Honda Engine
- ▶ Available with 19 Hp Diesel Kohler Engine on request
- ▶ 20" HG Continuous Duty
- ▶ 15 PSI Continuous Duty
- ▶ Electric Start
- ▶ Integrated Belt Guard – fully enclosing all moving parts for safety
- ▶ One-year performance warranty



## Product Information

### Pumps

PRODUCT OVERVIEW								
Pump Number	968140	968150	968235	968245	968435	968440	968685	968675
Pump Model	HXL2F	HXL2V	HXL3F	HXL3V	HXL4F	HXL4V	HXL75F	HXL75V
Pump RPM	1,250 - 1,750	1,250 - 1,750	1,250 - 1,750	1,250 - 1,750	1,100 - 1,400	1,100 - 1,400	1,100 - 1,250	1,100 - 1,250
Pump Max CFM	75	75	112	112	165	165	230	230
Rec. Tank Size (Gal.)	100-750	100-750	750-1000	750-1000	1000-1500	1000-1500	1500-2500	1500-2500
Vacuum (Continuous)	20	20	20	20	20	20	20	20
Pressure (Continuous)	N/A	15	N/A	15	N/A	20	N/A	20

### Pro Pack Engine Drive Systems

PRODUCT OVERVIEW									
System Number	12619	12621	12548	12626	12929	12628	12631	12630	12617
Pump Model	HXL2F	HXL2V	HXL2F	HXL2V	HXL3F	HXL3V	HXL4F	HXL4V	HX75V
Pump RPM	1,750	1,750	1,750	1,750	1,750	1,750	1,250	1,250	1,100
Pump Max CFM	75	75	75	75	112	112	165	165	230
Rec. Tank Size (Gal.)	100-750	100-750	100-750	100-750	750-1000	750-1000	1000-1500	1000-1500	1500-2500
Vacuum (Continuous)	20	20	20	20	20	20	20	20	20
Pressure (Continuous)	N/A	5	N/A	10	N/A	10	N/A	15	15
Oil Reservoir	Integral	Integral	Integral	Integral	Integral	Integral	Integral	Integral	Remote

ENGINE FEATURES									
Engine HP	5.5	5.5	9	9	9	9	13	13	13
Clutch	YES	YES	YES	YES	YES	YES	NO	NO	NO
Battery Included	NO	NO	NO	NO	NO	NO	YES	YES	YES

### EZ Range Engine Drive Systems

PRODUCT OVERVIEW								
System Number	12632	12633	12634	12635				
Pump Model	HXL2V	HXL3V	HXL4V	HXL4V				
Pump RPM	1,750	1,750	1,250	1,250				
Pump Max CFM	75	112	165	165				
Rec. Tank Size (Gal.)	100-750	750-1000	1000-1500	1000-1500				
Vacuum (Continuous)	20	20	20	20				
Pressure (Continuous)	5	10	15	15				
Oil Reservoir	Integral	Integral	Integral	Integral				
Oil Separator/Muffler	NO	NO	NO	YES				

ENGINE FEATURES								
Engine HP	5.5	9	13	13				
Clutch	YES	YES	NO	NO				
Battery Included	YES	YES	YES	YES				



# Masport Tank Components & Accessories

## 1 Primary Trap

- ▶ Available in a range of sizes to suit airflow from 20 – 400 CFM
- ▶ Port sizes in 1½" and 3"
- ▶ Steel Collar



## 9 Sight Glasses

- ▶ 5" Tempered Glass Design
- ▶ Steel collar



## 6 Relief Valves

- ▶ Vacuum Relief Valve 1½"
- ▶ Pressure Relief Valve 1½" and 2"



## 3 Oil Separator

- ▶ Available in a range of sizes to suit airflow from 20 – 400 CFM
- ▶ Port sizes in 1½", 2½" and 3"
- ▶ Steel or aluminium construction
- ▶ Painted or unpainted finish



## 2 Scrubber

- ▶ Available in a range of sizes to suit airflow from 20 – 400 CFM
- ▶ Port sizes in 1½", 2½" and 3"
- ▶ Horizontal and vertical designs
- ▶ Painted or unpainted finish



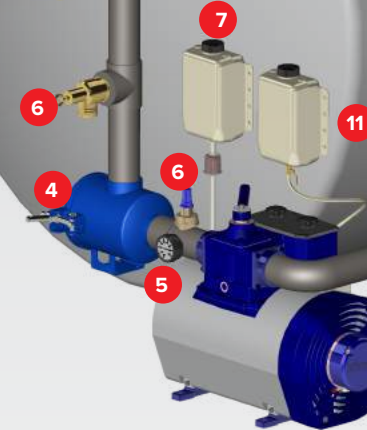
## 4 Pre-Filter

- ▶ Available in a range of sizes to suit airflow from 20 – 400 CFM
- ▶ Port sizes in 1½" and 3"
- ▶ Painted or unpainted finish



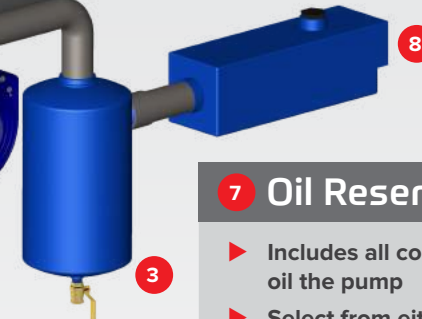
## 5 Vacuum/Pressure Gauges

- ▶ Available as either vacuum only or combined vacuum and pressure



## 7 Oil Reservoir

- ▶ Includes all components to properly oil the pump
- ▶ Select from either plastic or steel reservoir tanks
- ▶ Specially formulated Masport Oil available



## 8 Pumper Scent

- ▶ Effectively remove foul odors when pumping
- ▶ Port sizes in 1½", 2", 3" and 4"



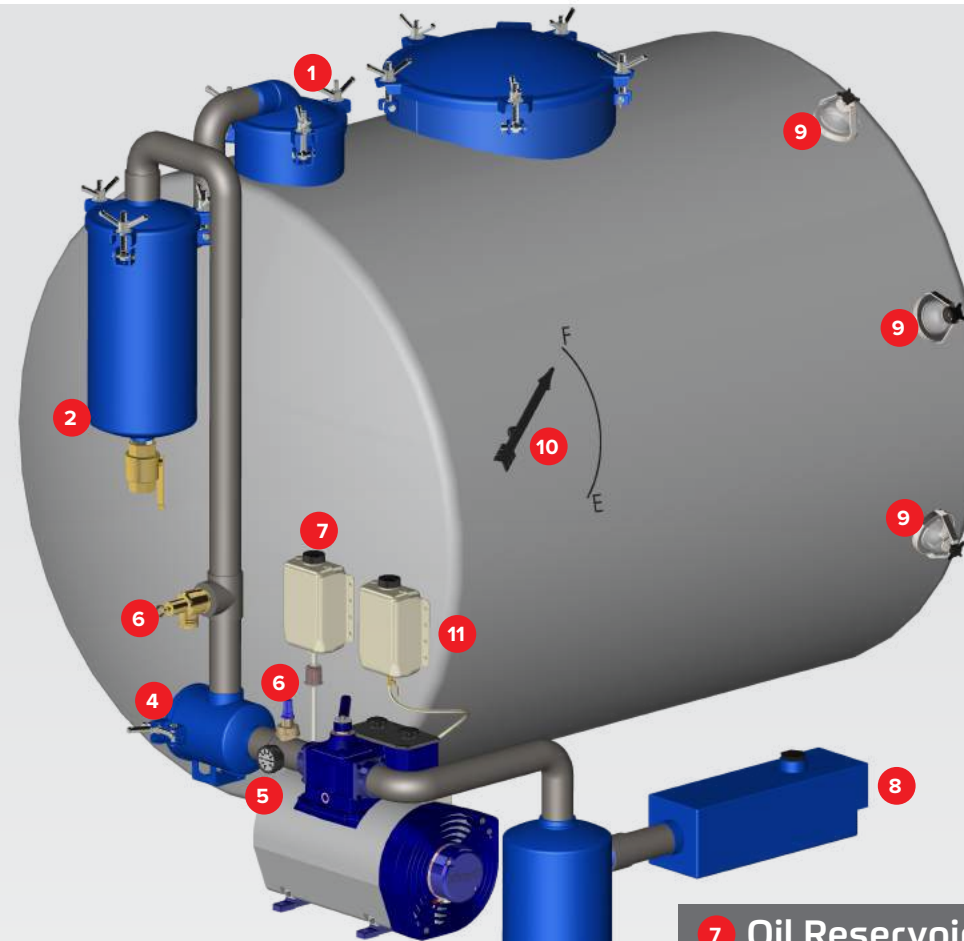
## 10 Tank Level Indicator

- ▶ External indicator arrow
- ▶ Steel collar



## 11 Flushing Kit

- ▶ Includes all components to properly flush the pump
- ▶ Select from either plastic or steel reservoir tanks
- ▶ Specially formulated Masport Flushing Fluid available



# Slide-In Tank Pump Systems



**BUILT FOR THE HARD WORKING PUMPER**

**Masport Incorporated**  
6801 Cornhusker Highway, Lincoln, NE 68507, USA

**Phone: 800 228 4510**  
**Email: [cs@masportpump.com](mailto:cs@masportpump.com)**  
**[www.masportpump.com](http://www.masportpump.com)**