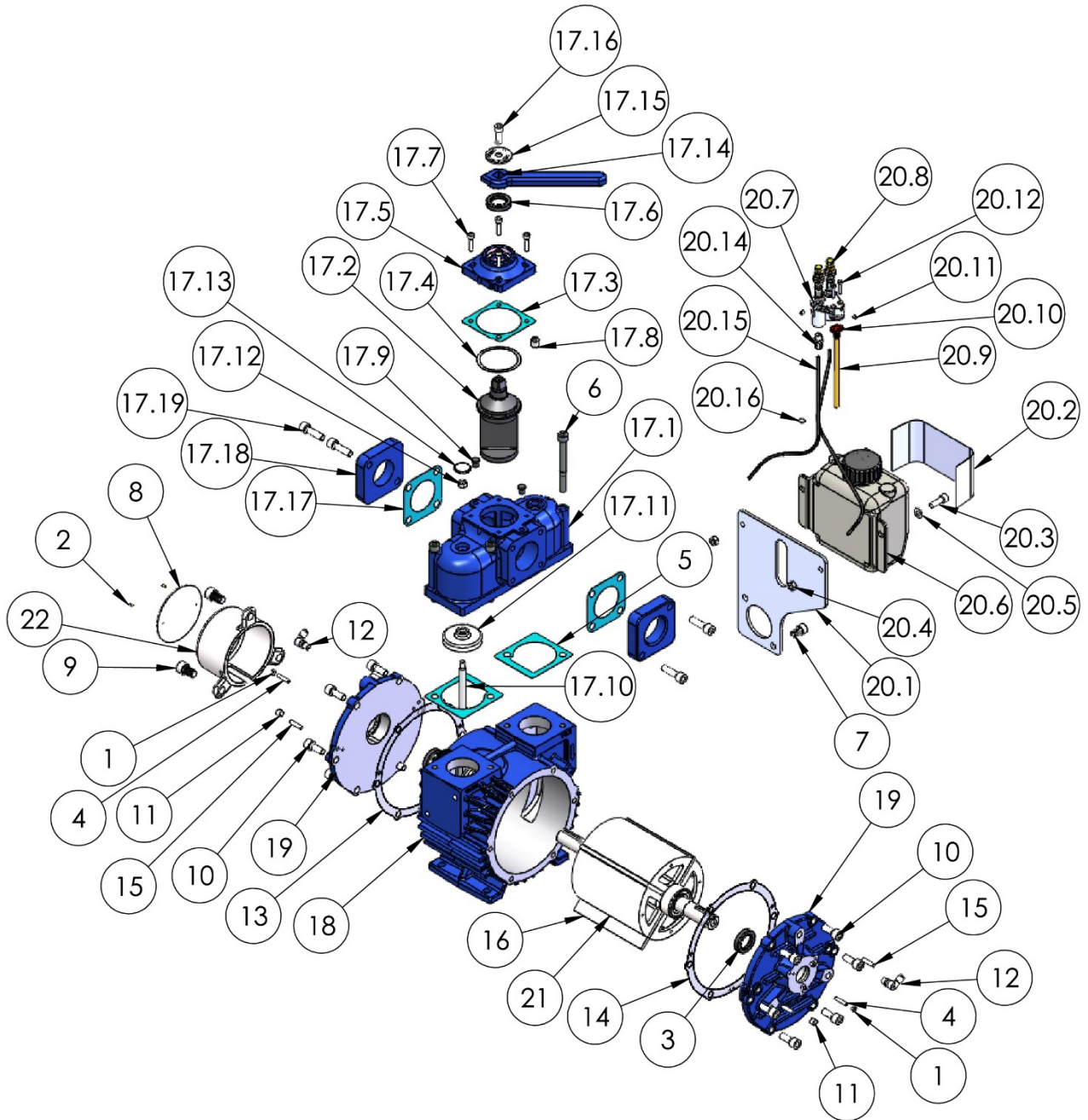


**HD3V:**


Item	Code	Description	Qty
1	220221	Nut - M5	6
2	500806	Rivet - 2.5 X 6	2
3	501578	Seal - 25 x 40 x 8	2
4	503225	Grub Screw - M5 x 20	6
5	568066	Gasket – Valve	2
6	568249	Bolt - M10 x 100	4
7	569218	Bolt - M10 x 16	2
8	569234	Pump Model Tag	1
9	569236	Bolt - 1/2" x 3/4"	3
10	569538	Bolt - M10 x 25	12
11	569726	Plug - 1/8"	2
12	569948	Oil Line Fitting	2
13	575005	Shim End Cover - .001"	*
14	575006	Shim End Cover - .002"	*
15	575111	Dowel Pin - 6 X 24	4
16	968236	Vane Pack	1
17.1	968359	Valve Body	1
17.2	968362	Spool	1
17.3	568063	Gasket - Valve Cap	1
17.4	568363	Wave Washer	1
17.5	968364	Valve Cap	1
17.6	501578	Seal - 25 x 40 x 8	1
17.7	11049	Bolt - M6 x 25	4
17.8	503416	Plug - 1/4"	1
17.9	568892	Rubber Plug	2
17.1	568343	Shoulder Bolt	1
17.11	968353	Non-Return Valve	1
17.12	504278	Nut - M8	1

Item	Code	Description	Qty
17.13	504288	Plug	1
17.14	668055	Valve Handle	1
17.15	569724	Indicator Washer	1
17.16	11063	Bolt - M8 x 25	1
17.17	36202	Gasket - Flange"	2
17.18	968159	Flange - 1 1/2"	2
17.19	501966	Bolt - M10 x 55	4
18	969203	Cylinder	1
19	969207	End Cover	2
20.1	33502	Oil Tank Bracket	1
20.2	39111	Oil Tank Sticker	1
20.3	11063	Bolt - M8 x 25	1
20.4	504278	Nut - M8	2
20.5	25059	Washer - M8	2
20.6	569209	Oil Tank - 1.5 Quart	1
20.7	969217	Dripper Housing	1
20.8	569146	Dripper	2
20.9	569212	Dip Tube	1
20.10	569213	Dripper Clamp Ring	1
20.11	504264	Grub Screw - M5 x 6	2
20.12	569216	Bolt - M4 x 20	2
20.13	569214	Dripper Clamp Gasket	1
20.14	569947	Oil Line Fitting	2
20.15	600293	Oil Line	2
20.16	503054	Cable Tie	1
21	969233	Rotor Assembly	1
22	969237	Shaft Cover	1

Notes: \* Quantities Vary